

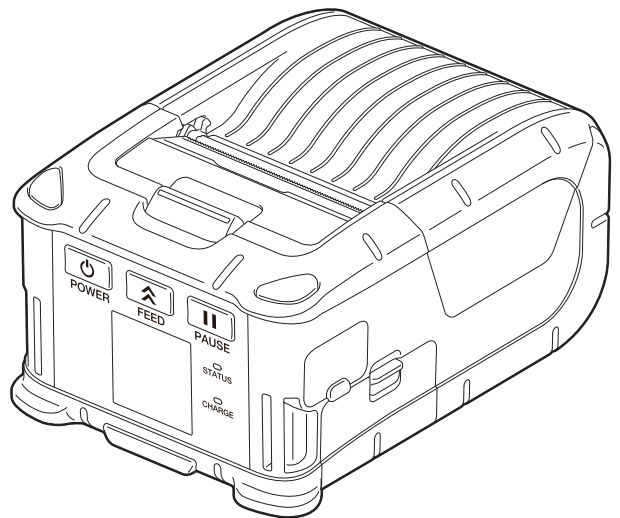
TOSHIBA

Portable Printer

Owner's Manual

B-FP2D-GH30-QM-S

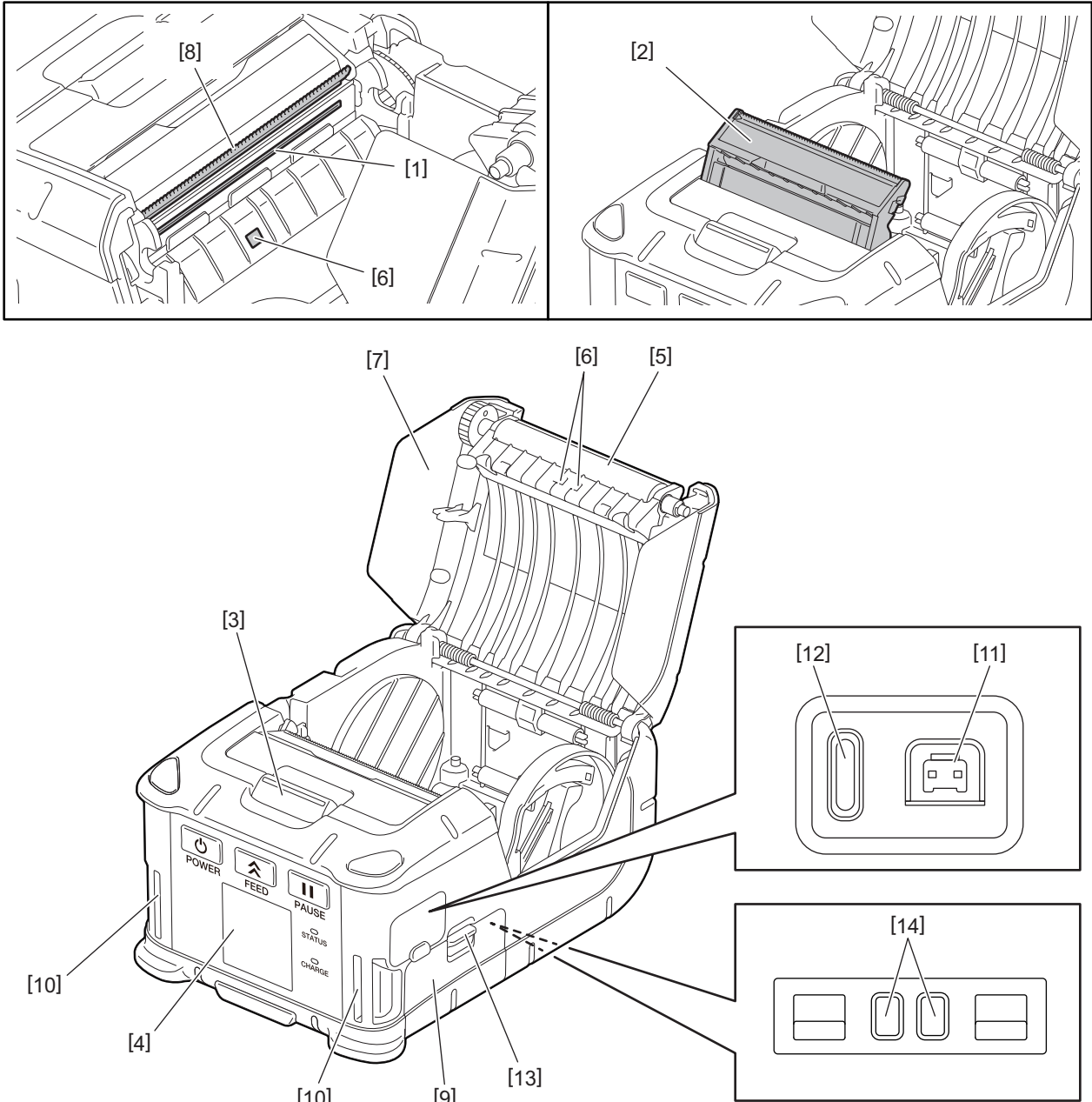
B-FP2D-GH50-QM-S



CONTENTS

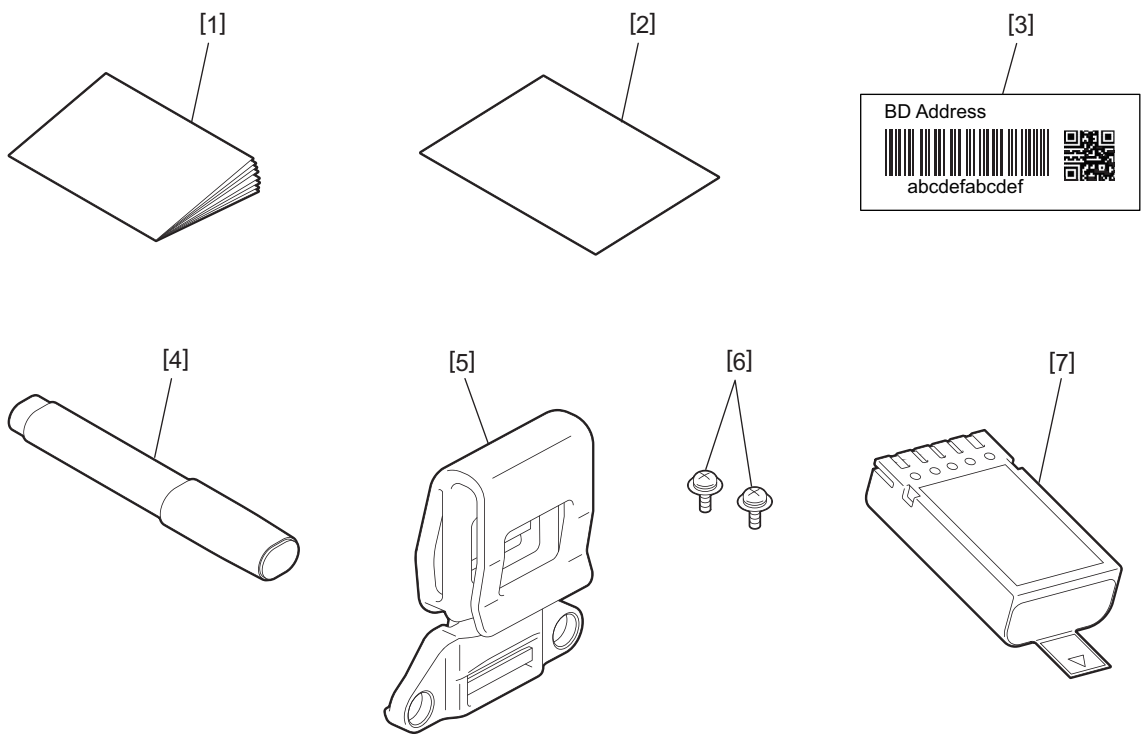
1. Part Names	2
2. Accessories	3
3. Operation Panel Functions	4
4. Loading the Battery Pack	6
5. Removing the Battery Pack	8
6. Charging the Battery Pack with an Optional Adapter	9
7. Loading the Media Roll	10
8. Before using the Peel-off Unit	12
How to put away the peel-off roller	14
9. How to Attach the Accessories	15
Belt clip	15
Shoulder strap (Option)	16
10. Data Transmission	17
USB	17
Wireless	18
11. Daily Maintenance.....	19
Print head	19
Platen and the peel-off shaft	19
Media sensor window and the media path	20
Top cover and the operation panel	20
12. Troubleshooting	21
13. Printer Specification	24
14. Media Specification	25
15. Care/Handling of the Media Roll	27

1. Part Names



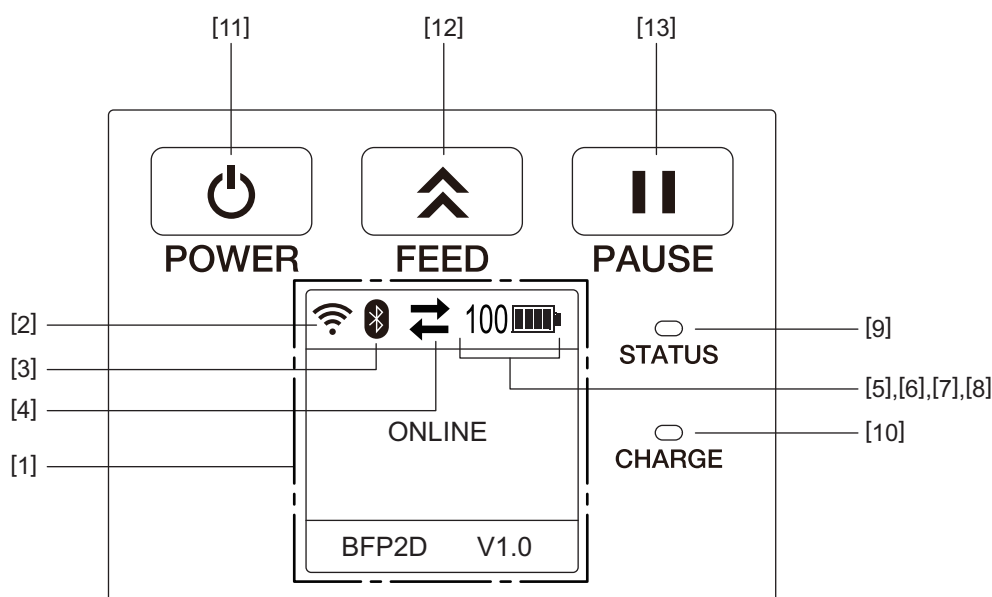
No.	Part Name	No.	Part Name
1	Print head	11	DCIN connector
2	Peel-off unit	12	USB port
3	Top cover open button	13	Battery lever
4	Operation panel	14	Charging terminal
5	Platen		
6	Media sensor		
7	Top cover		
8	Tear bar		
9	Battery cover		
10	Strap slot		

2. Accessories



No.	Part Name	No.	Part Name
1	Safety Information	5	Belt clip
2	QSG	6	M-3x8 screw
3	BD address label	7	Battery pack
4	Print head cleaner		








3. Operation Panel Functions



Note

Do not touch the operation panel with a sharp object, as its surface is easily damaged.

No.	Name/Icon	Function/Usage		
[1]	LCD (Liquid Crystal Display)	Displays the printer status icons, such as the radio intensity, battery level and etc. The printer status is indicated in alpha numerals characters or symbols.		
	LCD Message	ONLINE	The printer is ready for an issue command from the host PC.	
		PAUSE	The printer is in the pause state. When the printer is paused during printing, the number of unprinted labels is displayed.	
		COVER OPEN	The top cover is open.	
		LBL PRESENT ****	The printer is waiting for a printed label to be removed from the media outlet. "****" indicates the number of unprinted labels.	
		WAITING(XXXX)	The printer is waiting for the recovery of the battery voltage or the temperature decrease of the print head or motor.	
[2]	WLAN signal strength		Indicates the WLAN intensity in 5 levels	
[3]	Bluetooth		Bluetooth connected	Indicates the Bluetooth connection status
			Bluetooth not connected	
[4]	Transmission		Data transmission/reception	Indicates the data transmission status
			Data reception by the printer	
			Data transmission to the host PC	

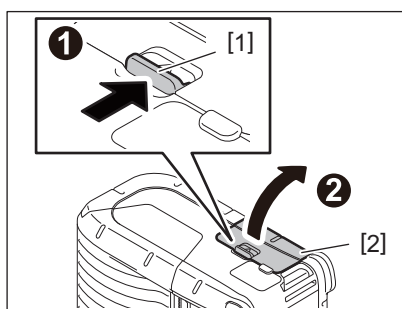
No.	Name/Icon	Function/Usage		
[5]	Sleep		This is displayed while the printer is in the power saving mode.	
[6]	Error		This is displayed when an error has occurred in the printer.	
[7]	Battery level	100 	Indicate the battery level in 10 levels and percentage level	
[8]	Parts alert		Platen roller nearly end alert	Indicates the time to change the platen roller soon.
			Platen roller end alert	Indicates the time to change the platen roller.
			Thermal head nearly end alert	Indicates the time to change the thermal head soon.
			Thermal head alert	Indicates the time to change the thermal head.
[9]	STATUS lamp	Lights or blinks in blue, red, purple or orange to indicate the printer status <ul style="list-style-type: none">• Lights up in blue: Normal state• Lights up in purple: Low-battery warning state (Operable)• Lights up in red: Low-battery state• Blinks in blue: Communicating or internal processing is in progress or a printed label is waiting to be removed.• Blinks in red: Error state		
[10]	CHARGE lamp	Lights up in orange while the battery pack is charging and goes out when the battery charge is completed		
[11]	[POWER] button	Turns the printer on or off How to turn on the printer While the printer is off, hold down the [POWER] button for a few seconds. When “ONLINE” is displayed on the LCD, the printer is ready. How to turn off the printer Hold down the [POWER] button until the LCD goes off.		
[12]	[FEED] button	Feeds media or reprints previously printed data items. The function of the [FEED] button differs depending on the issue mode.		
[13]	[PAUSE] button	Temporarily stops media issuing or restarts printing. This is used to recover the printer after the clearing of an error.		

4. Loading the Battery Pack

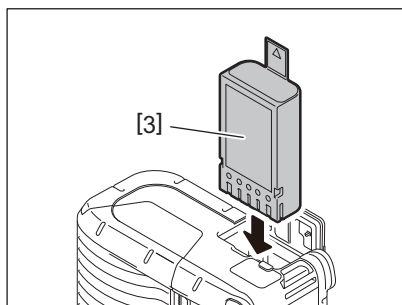
WARNING!

- If the battery pack leaks liquid or gives out smoke or a bad smell, immediately stop using it and keep it away from fire. Failure to do this may cause an explosion or a fire.
- In the United States, used lithium ion batteries should be returned to the store where you bought the machine. (USA only)
- LITHIUM ION BATTERIES MUST BE DISPOSED OF PROPERLY.
- Do not handle a damaged or leaking lithium ion battery.
- To avoid injury, be careful not to drop the battery pack on your feet.

- 1 Press the battery lever [1] to open the battery cover [2].**



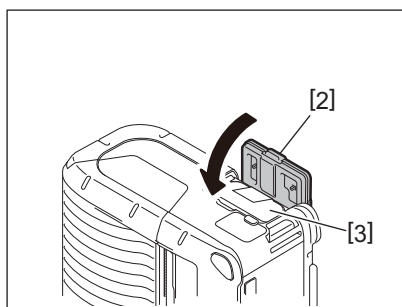
- 2 Insert the battery pack [3] fully into the printer.**



- 3 The battery pack [3] is locked in by the battery cover [2].**

Note

Pay attention to the orientation of the battery pack [3].



Note

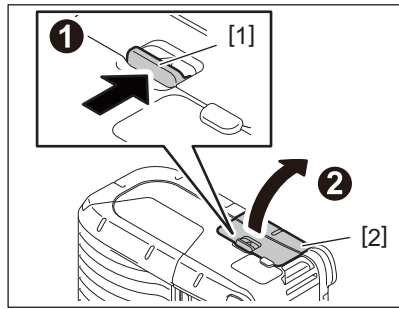
- Be sure to use only the battery pack designed and manufactured for use with the printer B-FP2D series Battery Pack:
B-FP803-BTH-QM-R
- When unpacked, the battery level of the supplied battery pack is not full. Charge the battery pack with an optional battery charger or load the battery pack in the printer and connect an optional adapter before using it.
 - 1-slot battery charger (B-EP800-CHG-QM-R)
 - 6-slot battery charger (B-EP800-CHG6-QM-R)
 - AC adapter (B-FP800-AC-QM-S)
 - 1-slot cradle charger (B-FP802-CR-QM-S)
 - 4-slot cradle charger (B-FP802-CR4-QM-S)
 - DC jack plug adapter (B-FP800-DCJA-QM-R)
- When using 1-slot cradle charger, it is possible to print while charging.
- When using 4-slot cradle charger, it is not possible to print while charging.

CAUTION!

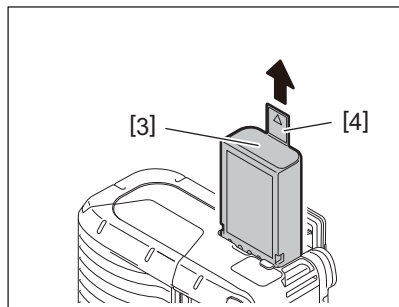
Do not connect any device other than the above to the printer.

5. Removing the Battery Pack

- 1** Press the battery lever [1] to open the battery cover [2].



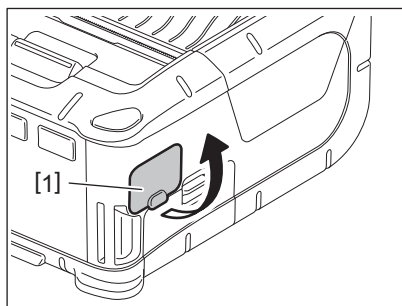
- 2** Pull the tab [4] to remove the battery pack [3] from the printer.



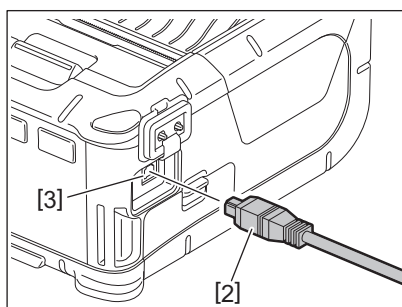
6. Charging the Battery Pack with an Optional Adapter

Charge the battery pack in the printer using an optional AC adapter, cigarette lighter adapter, or DC adapter.

1 Open the cover [1].



2 Connect the power adapter cable [2] into the DCIN connector [3].

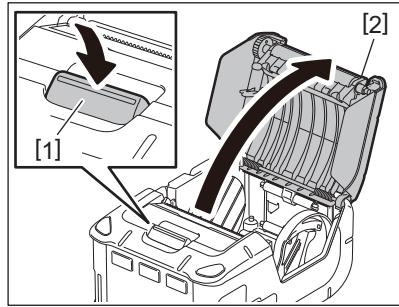


Note

- For details, refer to the Owner's Manual for the respective optional adapters.
- When using an optional battery charger to charge the battery packs, refer to the Owner's Manual for the respective models of battery chargers.
- Even if the ambient temperature is within the operating temperature, the battery pack may not be charged for safety depending on the temperature of the battery pack.

7. Loading the Media Roll

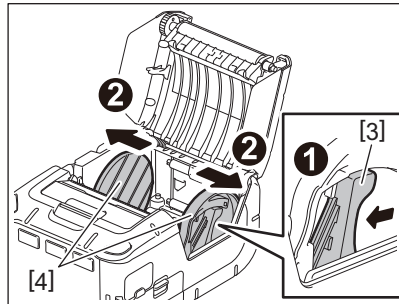
- 1 Push the top cover open button [1] to open the top cover [2].**



CAUTION!

The print head has become hot immediately after printing. Therefore, cool it down before loading the media roll.

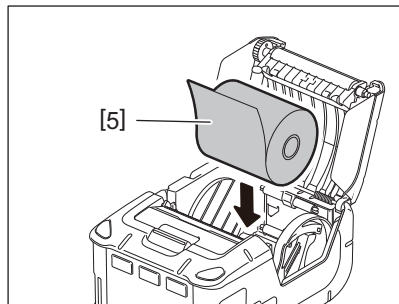
- 2 Move the paper guide lever [3] toward the operation panel side and the paper guides [4] outward.**



Note

Do not move the paper guides without unlocking the paper guide lever. This may cause a breakage of the paper guides.

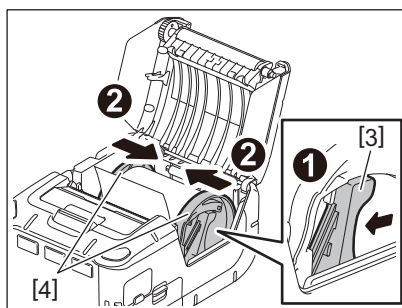
- 3 Place the media roll [5] in the printer.**



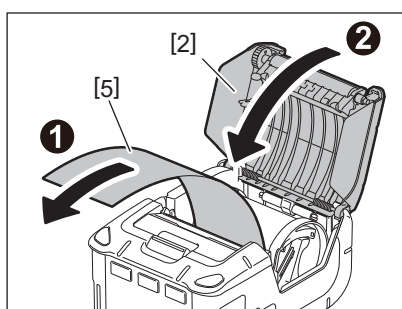
Note

- Be careful when working with the tear bar. Its edge is sharp.
- Only outside wound media roll can be used in this printer.

-
- 4** Move the paper guide lever [3] toward the operation panel side. Adjust the paper guides [4] to the media roll width.



- 5** Pull the top edge of the media roll [5] toward the operation panel side. Remove the slack of the media roll and close the top cover [2].



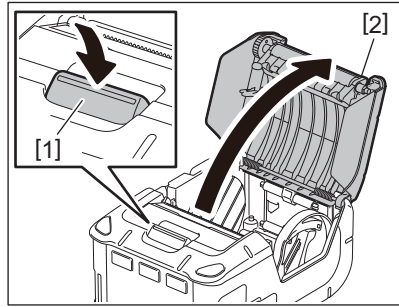
Note

- Use the Toshiba Tec approved media only. Toshiba Tec is not responsible for any print result due to the use of other media.
- When you order media, contact the nearest Toshiba Tec representative.

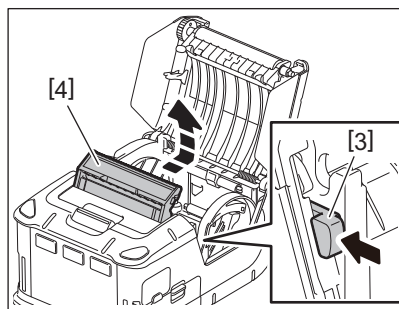
8. Before using the Peel-off Unit

When issuing labels in the peel-off mode, pull out the peel-off roller before loading a media roll.

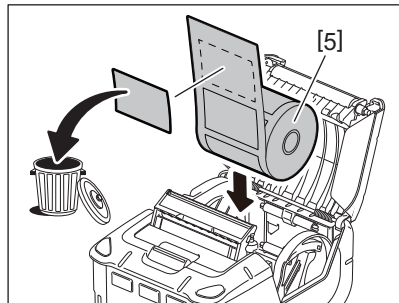
- 1 Push the top cover open button [1] to open the top cover [2].**



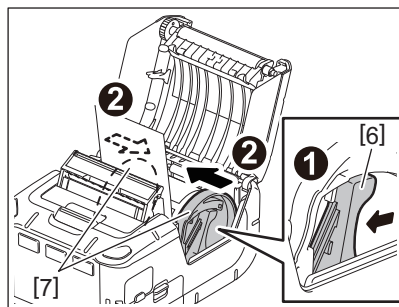
- 2 Push the lock lever [3] in the direction of the arrow. The peel-off unit [4] comes out.**



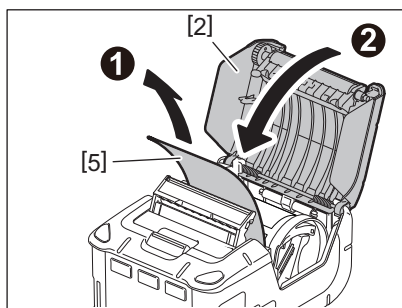
- 3 Refer to “Loading the Media Roll” on the previous page and set the media roll [5].**
Peel off one sheet of the label and dispose of it.



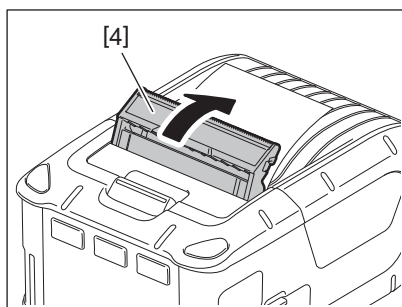
- 4 Move the paper guide lever [6] toward the operation panel side. Adjust the paper guides [7] to the media roll width.**



-
- 5** Pull the top edge of the media roll [5] toward the operation panel side. Remove the slack of the media roll and close the top cover [2].



- 6** Close the peel-off unit [4].

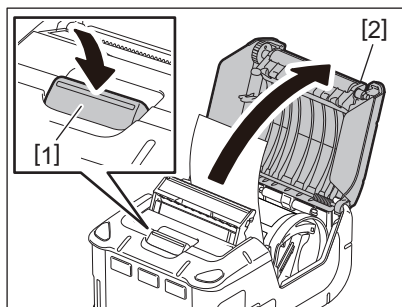


Note

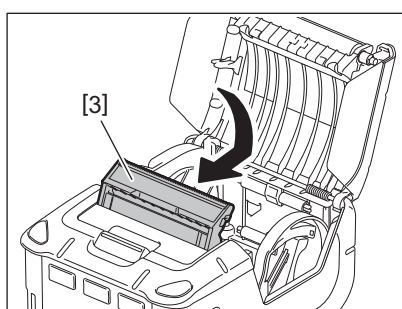
- Do not pull the center of the peel-off roller strongly. This may cause a breakage of the peel-off roller.
- Do not forcibly pull out the peel-off roller or push it into the printer. This may cause a breakage of the peel-off roller.
- Be careful when working with the tear bar. Its edge is sharp.

■ How to put away the peel-off roller

- 1** Push the top cover open button [1] to open the top cover [2].



- 2** Gently press the peel-off roller [3] down and push it into the printer in the direction indicated by the arrow until it clicks.



Note

- Do not pull the center of the peel-off roller strongly. This may cause a breakage of the peel-off roller.
- Do not forcibly pull out the peel-off roller or push it into the printer. This may cause a breakage of the peel-off roller.
- Be careful when working with the tear bar. Its edge is sharp.

9. How to Attach the Accessories

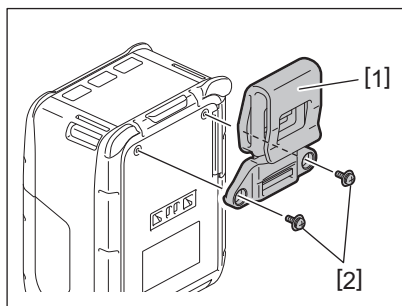
CAUTION!

- Care should be taken not to drop the printer when securing it to your waist or slinging it over your shoulder.
- For fixing the printer to your belt, its width should be 40 mm or less. The use of the other belts may cause the printer to fall.

■ Belt clip

When you use the printer fixing to your belt, secure the supplied belt clip to the printer back.

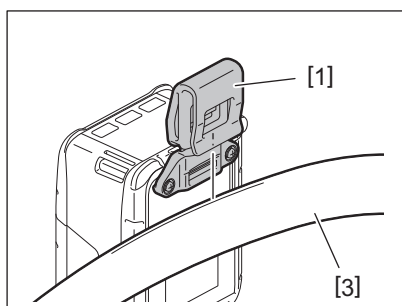
1 Secure the belt clip [1] to the printer back with two screws (M-3x8) [2].



Note

Only use the supplied screw to secure the belt clip. The use of another screw may damage the inside of the printer.

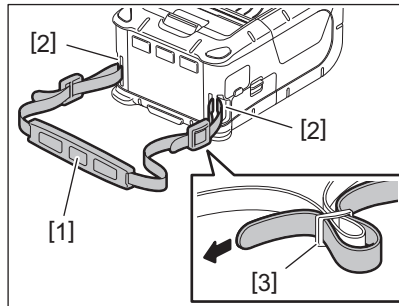
2 Fasten the belt clip [1] to your belt [3].



■ Shoulder strap (Option)

Follow the procedure below to fasten an optional shoulder strap (B-EP900-SS-QM-R) to the printer.

- 1** Pass either end of the shoulder strap [1] through the strap slot [2] on the front of the printer.
- 2** Pass the end of the shoulder strap [1] through the buckle [3]. Slide the buckle [3] to adjust the length of the shoulder strap [1].
- 3** Repeat for the other end of the shoulder strap [1].

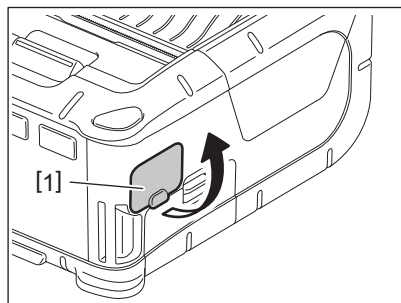


10. Data Transmission

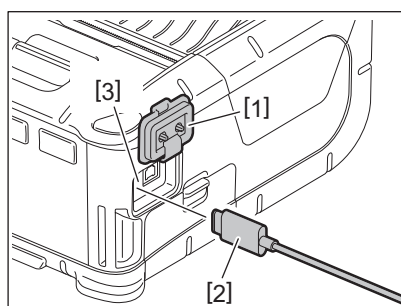
■ USB

1 Turn on the host PC and start the system.

2 Turn on the printer and open the cover [1].



3 Connect the USB cable [2] to the USB port [3].



4 Connect the USB cable to the host PC.

5 Send data from the host PC to the printer.

Note

- For details of the USB cable, consult the nearest Toshiba Tec representative.
- When disconnecting the USB cable, follow the instructions of the system of the host PC.

■ Wireless

1 When using Bluetooth, make sure that the printer is placed within 3 m of the host PC. In the case of the wireless LAN, place the printer within a wireless coverage area.

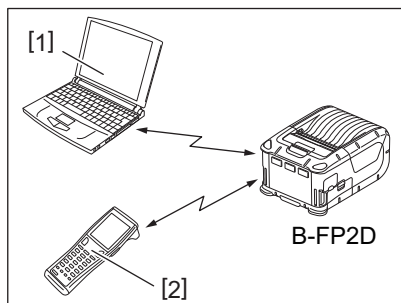
2 Turn on the printer and the host PC. Then send data from the host PC to the printer.

1. Host PC

(Via Bluetooth)

2. Handy terminal

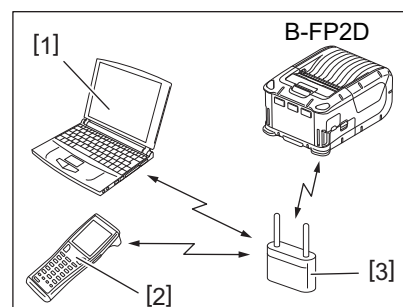
(Via Bluetooth)



Note

- Be sure to read “Precautions for Handling of Wireless Communication Devices” before operating the printer.
- Confirm that there are no obstacles between the printer and the host PC. Obstacles may cause a communication failure.

The radio connectivity is affected by the operating environment. Especially, metal obstacles, metal powder or locations enclosed by metal walls may prevent proper communication. For the installation location of access points, consult the nearest Toshiba Tec representative.



1. Host PC

2. Handy terminal

3. Access point

11. Daily Maintenance

To maintain the high quality and performance of the printer, regular cleaning is required.

CAUTION!

- DO NOT USE a sharp object to clean the print head or various rollers, as this may cause a print failure or even lead to the breakdown of the printer.
- NEVER USE any volatile solvent including thinner and benzene, as this may cause a print failure or even lead to the breakdown of the printer.
- Do not touch the print head element with your bare hands, as static electricity may damage the print head.
- The print head has become hot immediately after printing. Therefore, cool it down before loading the media.

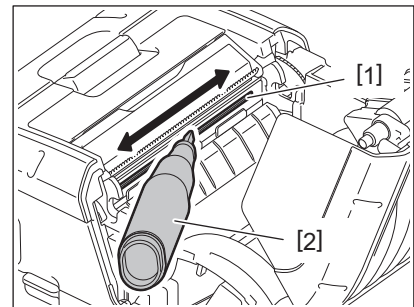
■ Print head

Clean the print head element [1] with a supplied print head cleaner [2].

After one or two linerless label media rolls are used, wipe off any residual glue dirt from the print head.

Note

Be careful when working with the tear bar. Its edge is sharp.

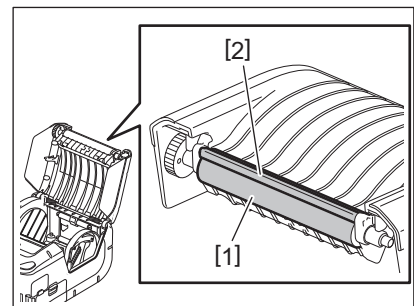


■ Platen and the peel-off shaft

While rotating the platen [1], clean it with a soft cloth slightly moistened with absolute ethyl alcohol.

Clean the peel-off shaft [2] with a soft cloth slightly moistened with absolute ethyl alcohol

Clean the platen of the linerless label kit (B-FP902-LL-QM-S) in the same way. Cleaning should be performed after one or two linerless label media rolls are used.

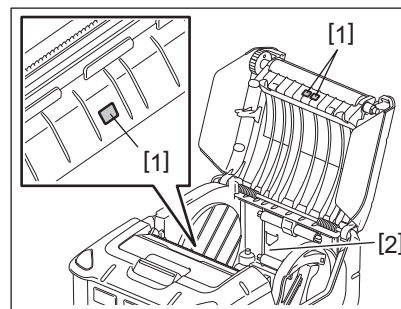


■ Media sensor window and the media path

Remove dust or dirt from the media sensor window [1] with a commercially available soft dry brush.

Clean the media path [2] with a soft dry cloth.

When linerless labels are used, wipe off the dirt of residual glues from the media guides each time one or two media rolls are used up.

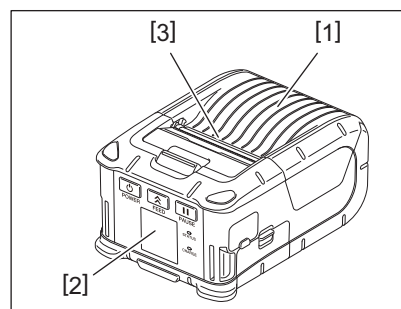


■ Top cover and the operation panel

Clean the cover and operation panel window [2] with a soft cloth slightly moistened with absolute ethyl alcohol.

Remove any residual glue dirt from the media outlet [3] with a cotton swab slightly moistened with absolute ethyl alcohol.

After one or two linerless label media rolls are used, wipe off any residual glue dirt from the top cover [1] or the media outlet [3].



12. Troubleshooting

When a problem occurs during operation, check the following troubleshooting guide and take an appropriate corrective action.

When the problem still persists even if the following solutions have been performed, do not attempt to repair it by yourself. Turn off the printer and remove the battery pack. Then contact a Toshiba Tec service representative for assistance.

When an error message is displayed

When an error message is displayed, follow the respective instruction then press the [PAUSE] button. The error will be cleared.

Error Message	Cause	Solution
COMMS ERROR	A parity error or framing error has occurred during communication.	Turn the power off and then back on. Send data from the host PC to the printer again. If the problem reoccurs, turn off the power and contact your Toshiba Tec service representative.
PAPER JAM	The media roll is not loaded correctly.	Load the media roll correctly.
	The media has jammed in the printer.	Remove the jammed media and load the media roll correctly. Press the [PAUSE] button.
	The media roll has not been fed correctly.	Load the media roll correctly and press the [PAUSE] button.
	The reflective sensor does not detect black marks.	Load the correct media roll with black marks and press the [PAUSE] button.
	The transmissive sensor does not detect gaps between the labels.	Load the correct media roll. If the problem reoccurs, set the threshold again.
NO PAPER	The printer ran out of media roll.	Load a new media roll and press the [PAUSE] button.
COVER OPEN	The top cover is open.	Close the top cover.
HEAD ERROR	A part of the print head element is broken.	Turn off the printer and contact your Toshiba Tec service representative for the replacement of the print head.
FLASH WRITE ERROR	A flash memory write error occurred.	Turn the power off and then back on. Send data from the host PC to the printer again. If the problem reoccurs, turn off the power and contact your Toshiba Tec service representative.
FORMAT ERROR	A flash memory format error occurred.	Turn the power off and then back on. Send data from the host PC to the printer again. If the problem reoccurs, turn off the power and contact your Toshiba Tec service representative.
FLASH MEMORY FULL	The flash memory has insufficient area for storing data.	Turn the power off and then back on. Reformat the memory to free up space then send data from the host PC to the printer again. If the problem reoccurs, turn off the power and contact your Toshiba Tec service representative.
LOW BATTERY	The remaining battery capacity is low.	Turn the power off and replace the battery pack with a fully charged one.

Error Message	Cause	Solution
EXCESS HEAD TEMPERATURE	The print head temperature reached the upper limit of the operating temperature.	Stop printing and wait until the printer is automatically restored. If the problem reoccurs, turn off the power and contact your Toshiba Tec service representative.
AMBIENT TEMP ERROR	The ambient temperature reached the upper limit of the operating temperature.	Stop printing until the ambient temperature falls within the printer's operating temperature range.
BATTERY TEMP ERROR	The battery is extremely hot.	Turn off the printer. Disconnect the power adapter if connected. Wait until the battery temperature falls within the printer's operating temperature range.
HIGH VOLT.ERROR	The battery voltage is abnormal.	Turn off the printer. Remove the battery pack, reload it and turn on the printer again. If the problem reoccurs, turn off the power and contact your Toshiba Tec service representative.
CHARGE ERROR	An error was detected while charging the battery pack.	The battery life have reached the end. Replace the battery pack with a new one.
Command error example PC001;0A00,0300,	When a command error occurs, up to 16 alphanumeric digits or symbols are displayed on the upper line of the LCD.	Turn the power off and then back on. Send data from the host PC to the printer again. If the problem reoccurs, turn off the power and contact your Toshiba Tec service representative.
Other error messages	A hardware or software failure occurs.	Turn the power off and then back on. If the problem reoccurs, turn off the power and contact your Toshiba Tec service representative.

* Number of unprinted labels: 1 to 9999 (in units of label)

When the printer does not operate properly

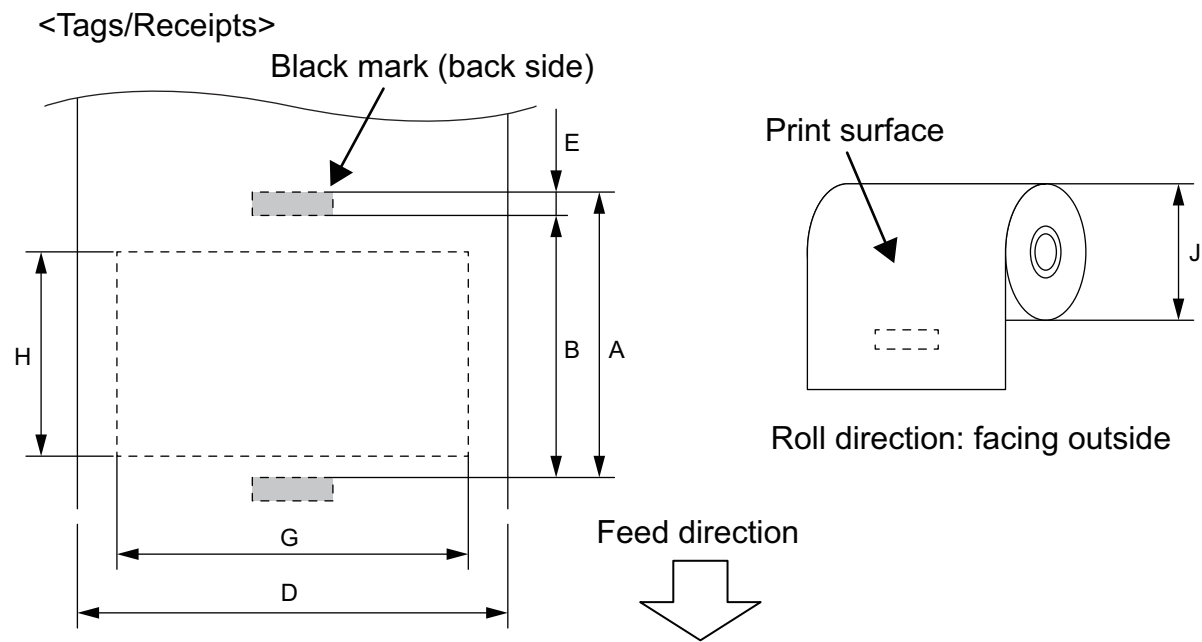
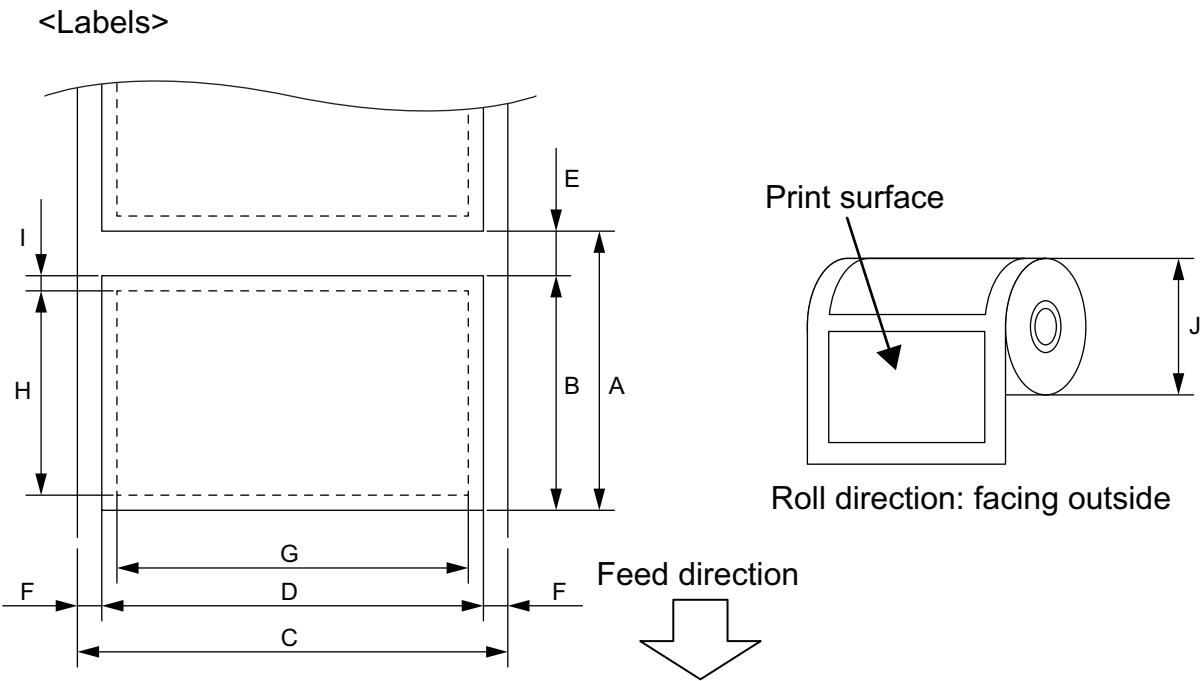
In the case of the following symptoms, check the respective points and take corrective action.

Symptom	Point to check (Cause)	Solution
The printer is not turned on by pressing the [POWER] button.	The battery pack is not loaded correctly.	Load a fully charged battery pack correctly.
The fully charged battery pack is loaded but the operating time is short.	The battery life has expired.	Load a fully charged new battery pack
The printer cannot communicate via the USB.	The printer is not turned on.	Turn on the printer.
	The printer is communicating via the wireless communication.	Terminate the wireless communication.
	The issue mode is incorrect.	Select a correct issue mode.
The printer cannot communicate via Bluetooth.	The printer is not turned on.	Turn on the printer.
	The distance to the host PC is too far.	Move the printer closer to the host within 3 m.
	The printer is used in a location where it is subjected to noise or interference.	Avoid such locations.
	The printer address is not correctly set on the host PC.	Correctly set the print address on the host PC.
	The issue mode is incorrect.	Select a correct issue mode.
The printer cannot communicate via the wireless LAN.	The printer is not turned on.	Turn on the printer.
	The distance to the host PC is too far.	Move the printer within a wireless coverage area.
	Obstacles block the radio wave.	Use the printer in a location with no obstacles.
	The printer is used in a location where it is subjected to noise or interference.	Avoid such a locations.
	The printer address is not correctly set on the host PC.	Correctly set the print address on the host.
	The channel setting for the access point or host PC is incorrect.	Avoid using a channel which interferes with adjacent access points.
	The issue mode is incorrect.	Select a correct issue mode.
The printout is light.	The print head is dirty.	Clean the print head.
	The media roll is not loaded properly.	Load the media roll properly.
	Damaged media is used.	Load a new media roll.
	The media is not a Toshiba Tec approved one	Use a Toshiba Tec approved media.
The printer received print data but does not print.	The [STATUS] lamp is lit or blinking.	Clear the error.
	The media roll is not loaded correctly.	Load the media roll correctly.

13. Printer Specification

Model	B-FP2D-GH30-QM-S	B-FP2D-GH50-QM-S
Media type	Label, Tag, Receipt, Linerless Label	
Print method	Direct thermal	
Resolution	203dpi (8dots/mm)	
Print speed	Max 6 inches/s (152.4 mm/s) (Depending on the operating environment, print conditions, battery condition and etc.)	
Effective print width	54 mm (2 inches)	
Issue mode	Batch, Peel-off	
Barcode	UPC-A/E, EAN8/13, UPC-A/E add on 2&5, EAN-8/13 add on 2&5, Code39, Code93, Code128, EAN128, NW7, MSI, Industrial 2 of 5, ITF, Postnet, RM4SCC, KIX-code, GS1 Databar	
Two dimensional code	Data Matrix, PDF417, Maxicode, QR code, Micro PDF417, Micro QR, GS1 Data Matrix, Aztec	
Font	Bitmap: Alphanumeric 25types, Simplified Chinese 24x24(GB18030), Japanese gothic 16x16, 24x24, Mincho 32x32 Outline: 5 types Open type font: Noto Hans Sans (CJK)	
LCD	TFT Color LCD, 128 x 128 dots with the backlight	
Battery	7.2V 2500mAh (Nominal capacity) Li-Ion battery	
Dimension	97 (W) x 130 (D) x 69 (H) mm (Excluding the project parts)	
Weight (with a battery pack installed)	462 g	469 g
Operating temperature	-15°C to 40°C (5°F to 104°F)	
Operating humidity	20 to 80% RH (No condensation)	
Charging temperature	AC adapter: 0°C to 40°C (32°F to 104°F)	
Memory	Flash ROM: 128 MB, SDRAM: 32 MB	
Interface	Bluetooth V2.1+EDR	Bluetooth V2.1+EDR Wireless LAN (IEEE802.11a/b/g/n)
	USB 2.0 connector: USB-TypeC	
NFC	ISO/IEC14443 Type A, NFC Forum Type 2, 144 bytes	
Media sensor	Label gap Black mark Paper end Peel-off	
Option	1-slot battery charger (B-EP800-CHG-QM-R) 6-slot battery charger (B-EP800-CHG6-QM-R) AC adapter (B-FP800-AC-QM-S) 1-slot cradle charger (B-FP802-CR-QM-S) 4-slot cradle charger (B-FP802-CR4-QM-S) Shoulder strap (B-EP900-SS-QM-R) Spare battery pack (B-FP803-BTH-QM-R) Linerless Platen Kit (B-FP902-LL-QM-S) Carry Case (B-FP902-CC-QM-S) DC jack plug adapter (B-FP800-DCJA-QM-R)	

14. Media Specification



(Unit: mm)

Item		Media type	Label		Receipt		Linerless ^{*1}
		Mode	Batch	Peel-off	With black marks	Without black marks	
A	Label pitch	Min.	10.0	13.0	10.0		16.0
		Max.	999.9	67.0	999.9	-	-
B	Label length	Min.	7.0	10.0	7.0	-	-
		Max.	996.9	60.0	996.9	-	-
C	Backing paper width	Min.	26.0		-		-
		Max.	58.0		-		-
D	Label width	Min.	24.0		-		-
		Max.	58.0		-		-
D	Media width	Min.	-		24.0		32.0
		Max.	-		58.0		58.0
E	Label-to-label gap	Min.	3.0		-		-
		Max.	7.0		-		-
E	Black mark length	Min.	3.0			-	-
		Max.	7.0			-	-
F	Vertical gap width	Min.	1.0		-		-
		Max.	7.0		-		-
G	Effective print width	Max.	54.0				
H	Effective print length	Max.	995.0	58.0	995.0	-	-
I	Unprintable area		1.0 from the upper/lower label edge			-	6.5 from the upper label edge 1.0 from the lower label edge
J	Outer roll diameter	Max.	φ60.0				
	Roll direction		Outside only				

*1 A linerless Platen Kit (Option:B-FP902-LL-QM-S) is required to use linerless media. When using linerless media, contact your local distributor for consultation.

15. Care/Handling of the Media Roll

CAUTION!

Be sure to read carefully and understand the Supply Manual. Use only media that meets the specified requirements. The use of non-specified media may shorten the head life and result in problems with bar code readability or print quality. All media rolls should be handled with care to avoid any damage to the media rolls or printer. Read the following guideline carefully.

- Do not store the media rolls for longer than the manufacturer's recommended shelf life.
- Store media rolls on the flat end. Do not store them on the curved sides. This may flatten that side causing an erratic media advance and poor print quality.
- Store the media rolls in plastic bags and always reseal after opening. Unprotected media rolls can get dirty and any extra abrasion from any dust and dirt particles will shorten the print head life.
- Store the media rolls in a cool and dry place. Avoid areas where they would be exposed to direct sunlight, high temperatures, high humidity, dust or gas.
- The thermal paper used for direct thermal printing must not have specifications which exceed Ca^{++} 800 ppm, Na^+ 800 ppm, K^+ 800 ppm and Cl^- 600 ppm.
- Some ink used on pre-printed labels may contain components which shorten the print head's product life. Do not use labels pre-printed with ink which contains hard substances such as carbonic calcium (CaCO_3) and kaolin (Al_2O_3 , 2SiO_2 , $2\text{H}_2\text{O}$).

For further information, contact your local distributor or your media roll manufacturer.

Portable Printer
Owner's Manual
B-FP2D-GH30-QM-S
B-FP2D-GH50-QM-S

Toshiba Tec Corporation

1-11-1, OSAKI, SHINAGAWA-KU, TOKYO, 141-8562, JAPAN

© 2019-2023 Toshiba Tec Corporation All rights reserved

PRINTED IN INDONESIA
R221121Z7600-TTEC
BU22006200-EN
Ver0090