

SystemHealth Silent Install Manual

Index:

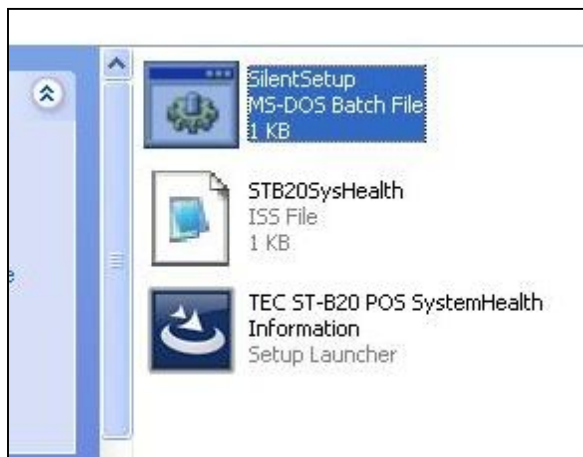
1. Silent Install with Default settings	1
1.1. Silent Install	1
2. Silent Install with selecting components.....	2
2.1. Open the response file	2
2.2.Silent Install	4
3. Normal Install	5

1. Silent Install with Default settings

This is the installation using default response file (.iss).

1.1. Silent Install

1.1.1. Start Silent Install



Run the “SilentSetup.bat” in the Kit.

Default Settings:

Community	public
TrapDest	127.0.0.1
InstallDir	C:\¥OPOS¥TEC

2. Silent Install with selecting components

This is the installation using customized response file (.iss). In this case, you need to edit the response file (.iss).

2.1. Open the response file

2.1.1. Open the file



Open the file (.iss) with text editor.

[Sample response file]

```
[{GUID }-DlgOrder]
Dlg0={ GUID }-SdWelcome-0
Count=4
Dlg1={ GUID }-SdCustomerInfo-0
Dlg2={ GUID }-SdAskDestPath-0
Dlg3={ GUID }-SdFinishReboot-0
[{ GUID }-SdWelcome-0]
Result=1
[{ GUID }-SdCustomerInfo-0]
szName=public
szCompany=127.0.0.1
nvUser=0
Result=1
[{ GUID }-SdAskDestPath-0]
szDir=C:\OPOS\TEC\
Result=1
[{ GUID }-SdFinishReboot-0]
Result=6
BootOption=3
```

*GUID means installer GUID. Each installer has specific GUID.

2.1.2. Setting of SNMP Trap target

<code>[{GUID}-SdCustomerInfo-0]</code> <code>szName=public</code> <code>szCompany=127.0.0.1</code>
--

Input “install type” to “[{GUID}-SdCustomerInfo-0] → szName and szCompany” from the following.

2.1.3. Selection of install destination

<code>[{ GUID }-SdAskDestPath-0]</code> <code>szDir=C:\OPOS\TEC\DRV</code>

Input install target directory to “[{GUID}-SdComponentDialog-0] → szDir”

2.1.5. Selection of reboot

<code>[{ GUID }-SdFinishReboot-0]</code> <code>Result=6</code> <code>BootOption=3</code>
--

Input the value to “[{GUID}-SdFinishReboot-0]→BootOption” from the following.

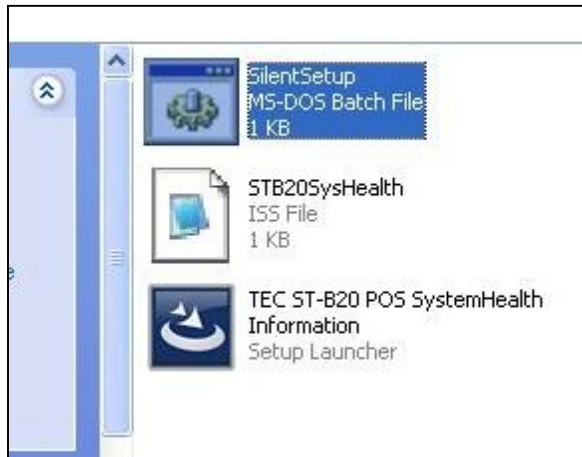
- Enable reboot: 3
- Disable reboot: 0

2.1.6. Save

Save settings and close file.

2.2.Silent Install

2.2.1. Start Silent Install



Run the “SilentSetup.bat”.

3. Normal Install

In the case of normal install, run the “TEC ST-B20 POS SystemHealth Information.exe” or “TEC ST-7000 POS SystemHealth Information.exe” in the Kit.

