

TRST-AxxCommander User'sManual

8thEdition :Dec29,2010

TOSHIBA TEC SINGAPORE PTE LTD

Copyright(C)2008
TOSHIBATECSINGAPOREPTELTD

This document describes the precautions for using the TRST-AXX Commander.

This document assumes that the reader is familiar with the following:

- General characteristics of Windows and ImagePrint Driver for Windows
- General characteristics of OPOS for Windows
- General characteristics of TRST-AXX printer

Notes:

- All rights reserved. It is prohibited to use or duplicate a part or whole of this document without the permission of TOSHIBA TEC SINGAPORE PTE LTD.
- This document is subject to change without prior notice.
- * Microsoft, Windows, Windows NT, Windows 2000, Windows 7 and Windows XP are registered trademarks of Microsoft Corporation in the United States and/or other countries.
- * The official name of Windows is the Microsoft Windows Operating System.

RevisionRecord

No.SPAA-273

TRST-AxxCommanderUser'sManual

Rev.No.	Date	Pages	Description
01	Oct.09,2008	--	Originalissue
02	Jan.14,2009	6-8, 15-18	Updates based on Version 2.08 software, the major changes are to add the function of "Get printer configuration" on the main window and add the configuration of "Flow Control" on "COM" setting on "InterfaceProperties" screen.
03	May06,2009	6-7, 9, 10,17	Updates based on Version 2.10, modified the alignment of GUI
04	Aug04,2009	6, 7, 9, 10,17	Updates based on Version 2.12, changed the interface of "BMP download", change "USBType" setting of "Printer configuration"
05	Aug21,2009	5, 6, 15,16	Updates based on Version 2.12, add the "LAN" internet interface
06	Jan25,2010	8, 15, 16,17	Updates on Gent L and implemented "Set Additional Feeder mode" setting, font size mode
07	No26,2010	5, 7, 12,13	Updates based on Version 2.27, update the windows platform to include windows 7, update GUI of "Define Bit Images"
08	Dec29,2010	5,	Updates based on Version 2.28, fix the syntax errors of last version

Table of Contents

1	Operation Environment	5
2	How to Start the Program	6
2.1	Start with double Click TRST Axx Commander Vx.xx.exe	6
2.2	There are five types of interfaces:	6
3	Commander Functions	8
3.1	Function 1: Printer Setting Changes	8
3.2	Function 2: Download Bit Images	12
3.3	Function 3: Define Top/Bottom/Reprint Messages	14
3.4	Function 4: Online Test Print	17
3.5	Function 4: Demo Print	23

1 Operation Environment

This utility works with below environment.

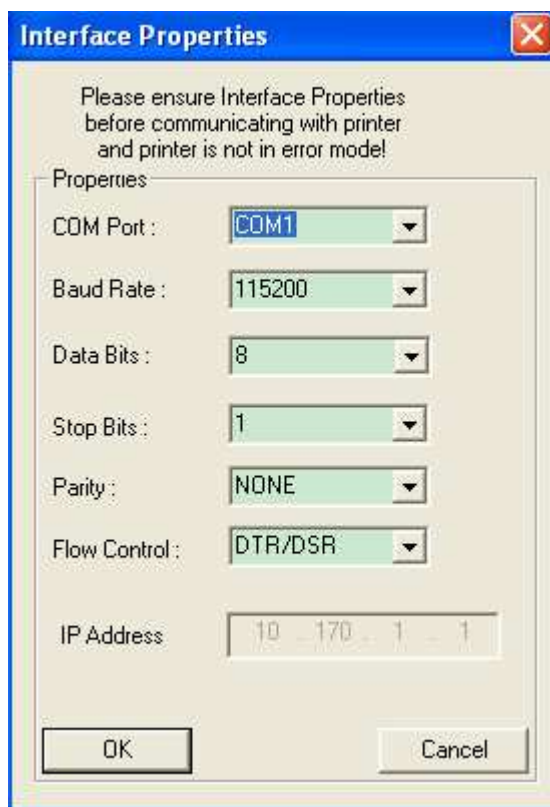
OS	Windows2000(SP4),WindowsXP(SP1,SP2),Windows 7
I/F	Serial,Parallel,USB(USBprinterclass/TECUSB),LAN

2 How to Start the Program

2.1 Start with double click TRST Axx Commander Vx.x x.exe



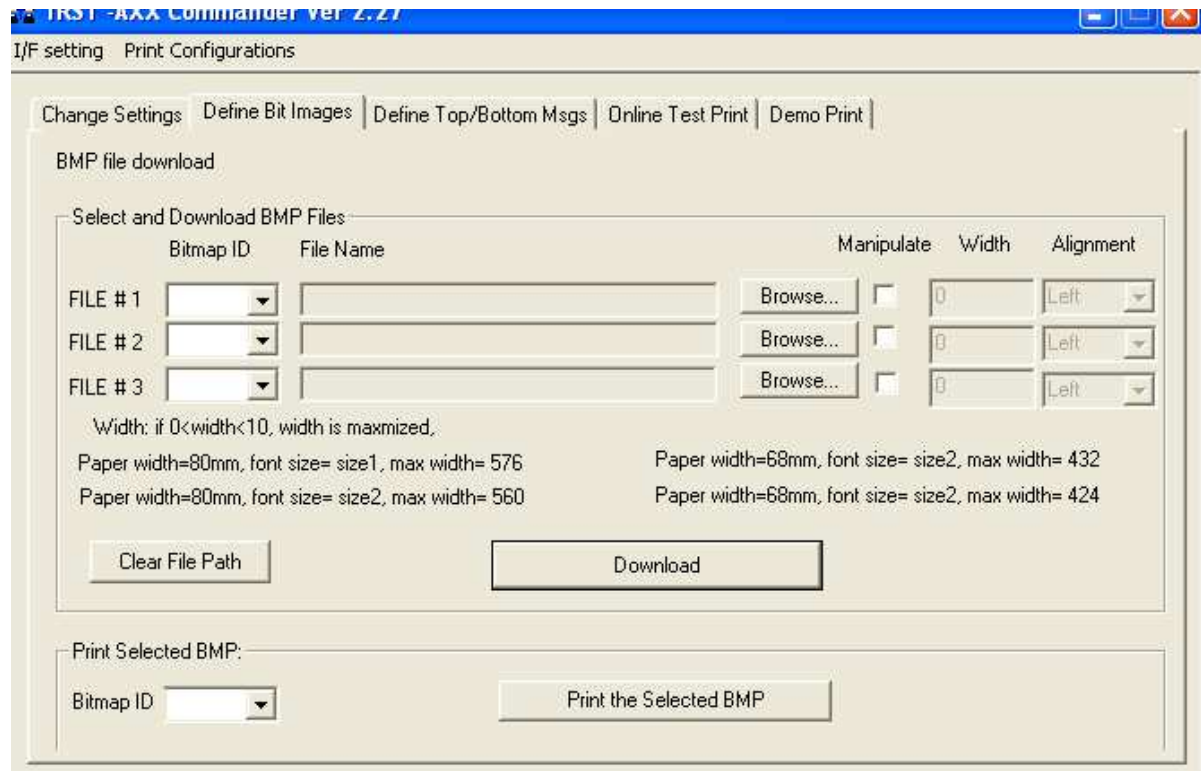
The interface setting window will pop-up, Make connection with printer by selecting proper Interface type. Select proper setting to match printer Interface properties, so that application can communicate with printer correctly. Also the previous used settings will be saved; restarting the utility the previous used configuration setting will be shown.



2.2 There are five types of interfaces:

- USB printer class (no need to install TEC USB driver)
- TEC USB (need to install TEC USB driver)
- Serial 232 port
- parallel port
- LAN (Ethernet)

After selecting the interface properties, the main window will be displayed:



3 Commander Functions

3.1 Function 1: Printer Setting Changes

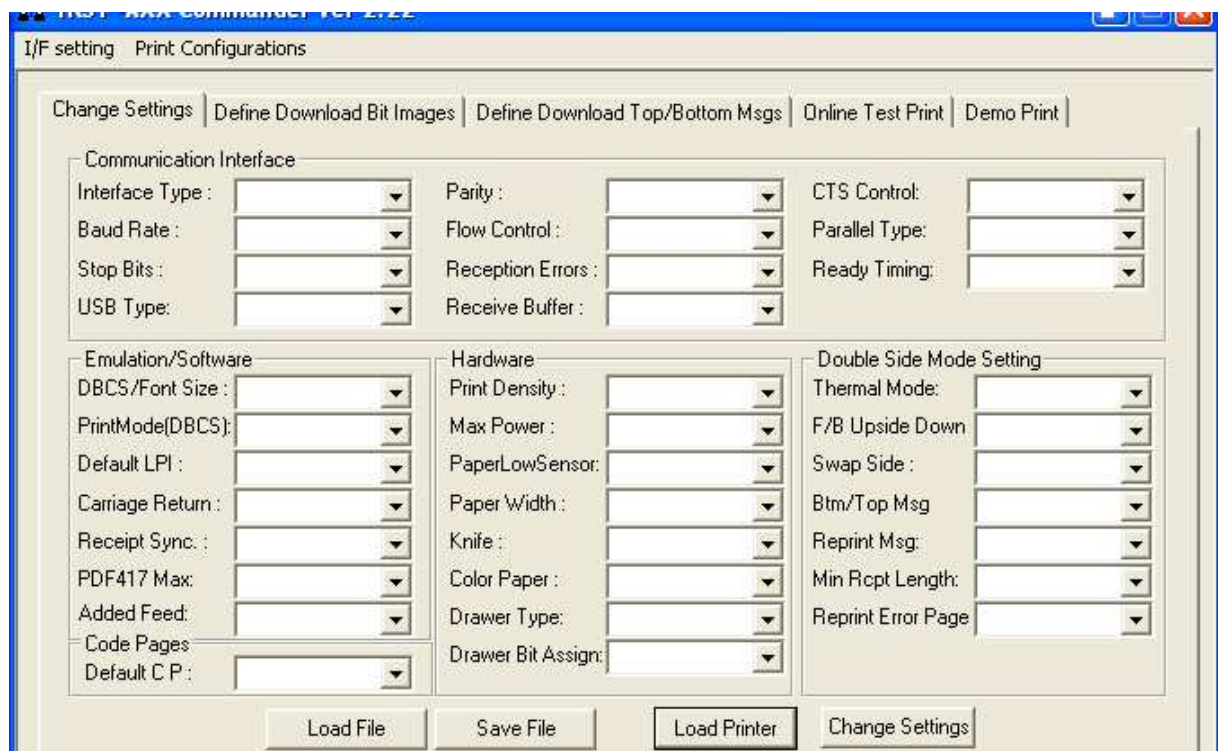
On the top tab menu, select "Change Printer Settings", there will be a window with various TRST Axx printer related settings. Thus, we can configure different printer settings respectively.

User can select these settings and click on "Save settings to File" to save these settings specified into a text format file, user can save one or several settings in the list.

User can change the values by dragging down the various boxes and after that, user can also click on "Load Settings" to load setting from a text file, a "Load config demo file" file is given as an example.

To read the current settings of the printer, click "Load Settings from Printer" button, the corresponding setting will be displayed.

After user configures these settings, user can click "Change Settings" to change to the corresponding settings.

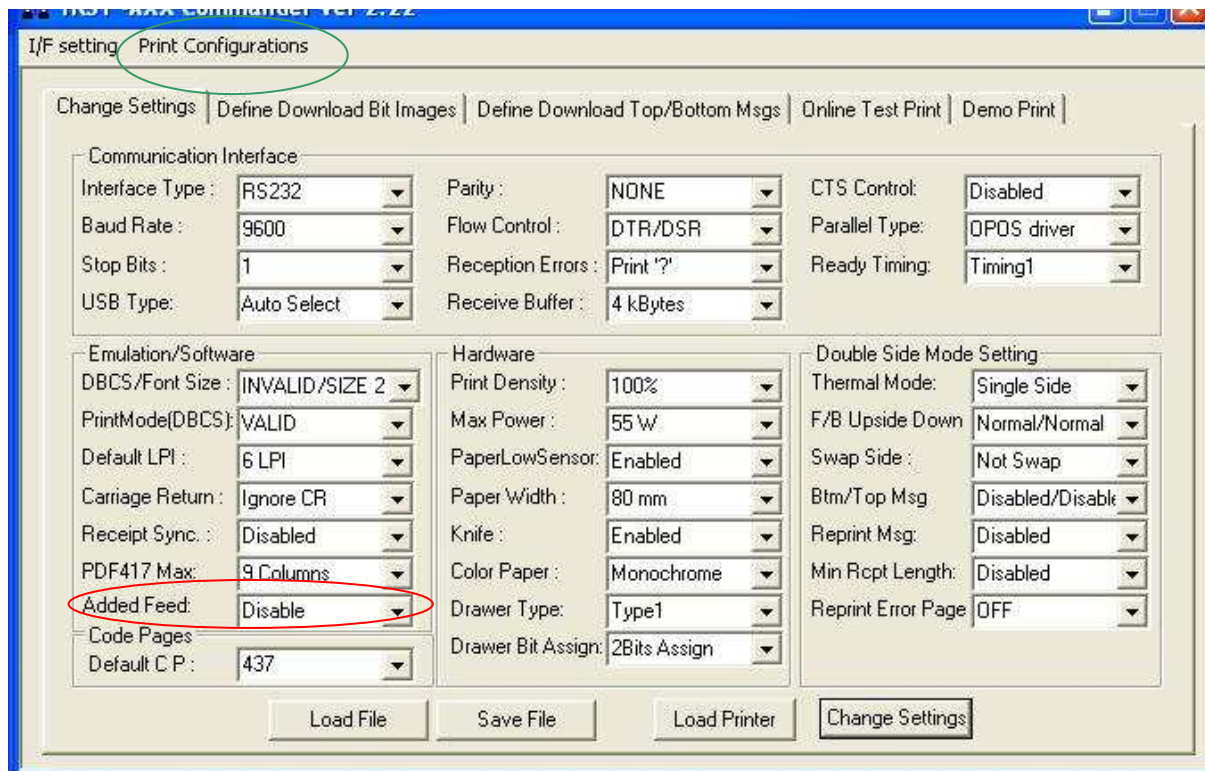


click "Change Setting" button, user can print out a configuration print after resetting printer is finished by click "Print configuration" button, also user can use "Load printer" to see the current setting, please make sure the "I/F setting" is correct.

For example, you want to change "added feed" in "change settings", please follow the following steps

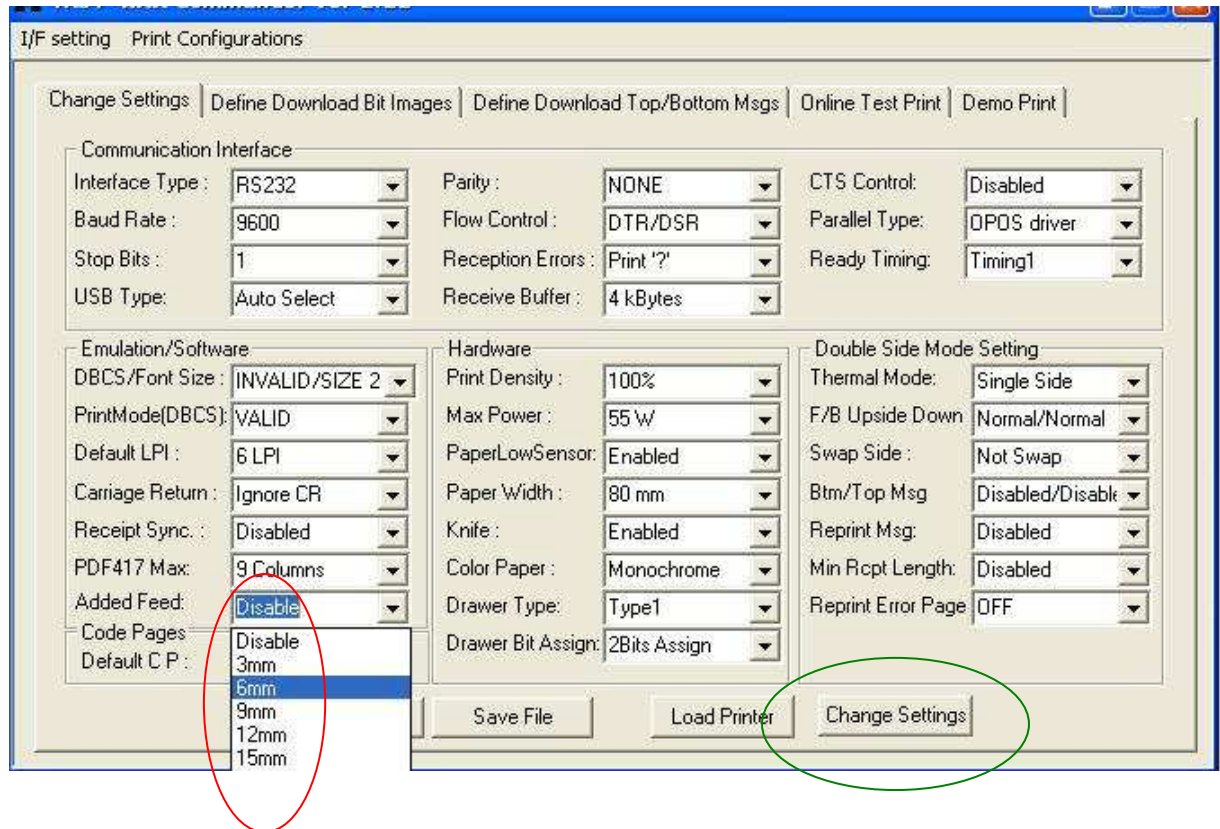
Step 1:

You can click on "load printer" to see the current printer settings, the "added feed" function is displayed in the left corner as shown in the following picture, alternatively, you can click on the "print configuration" to print out one configuration sheet to check the current configuration:



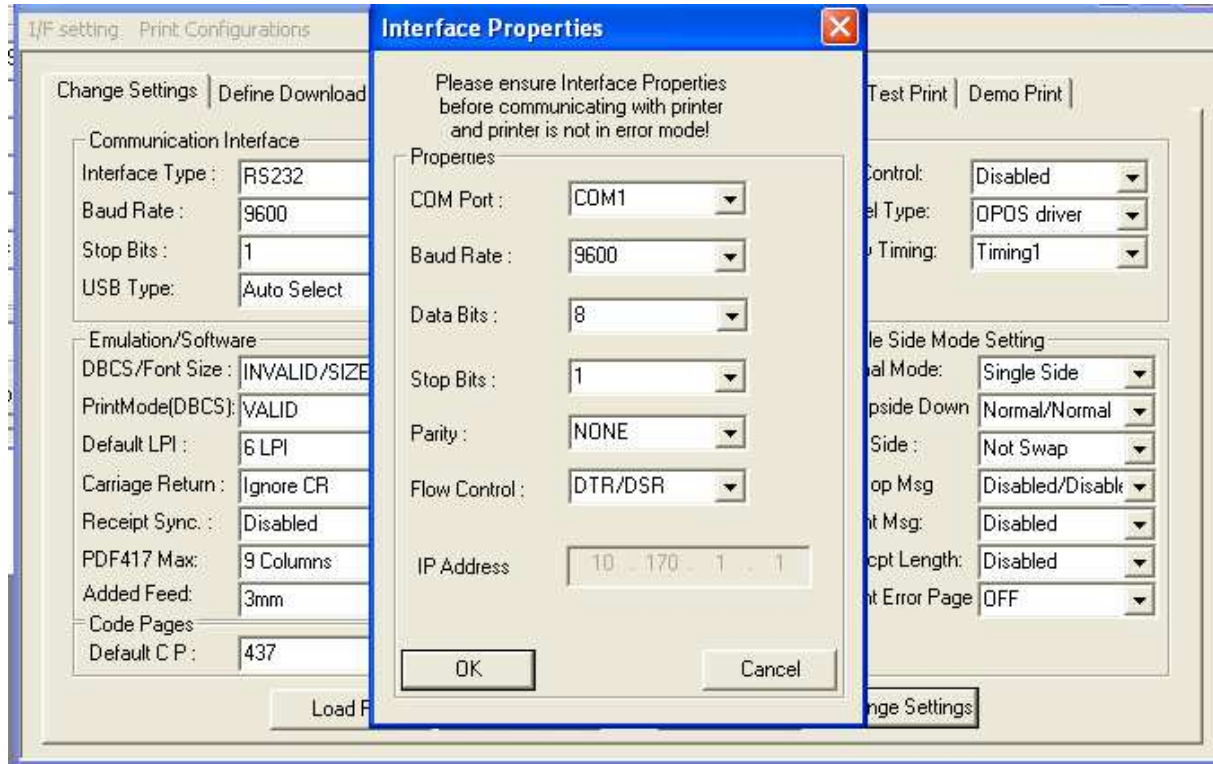
Step2:

select the settings you want to set, after select the setting.g"3mm", click on "change settings" on the right corner



Step3:

The interface properties will popup, for example if you use Gent-L model, as you have not changed any communication properties, there is no need to change the interface properties as it is the current settings, just click "OK"

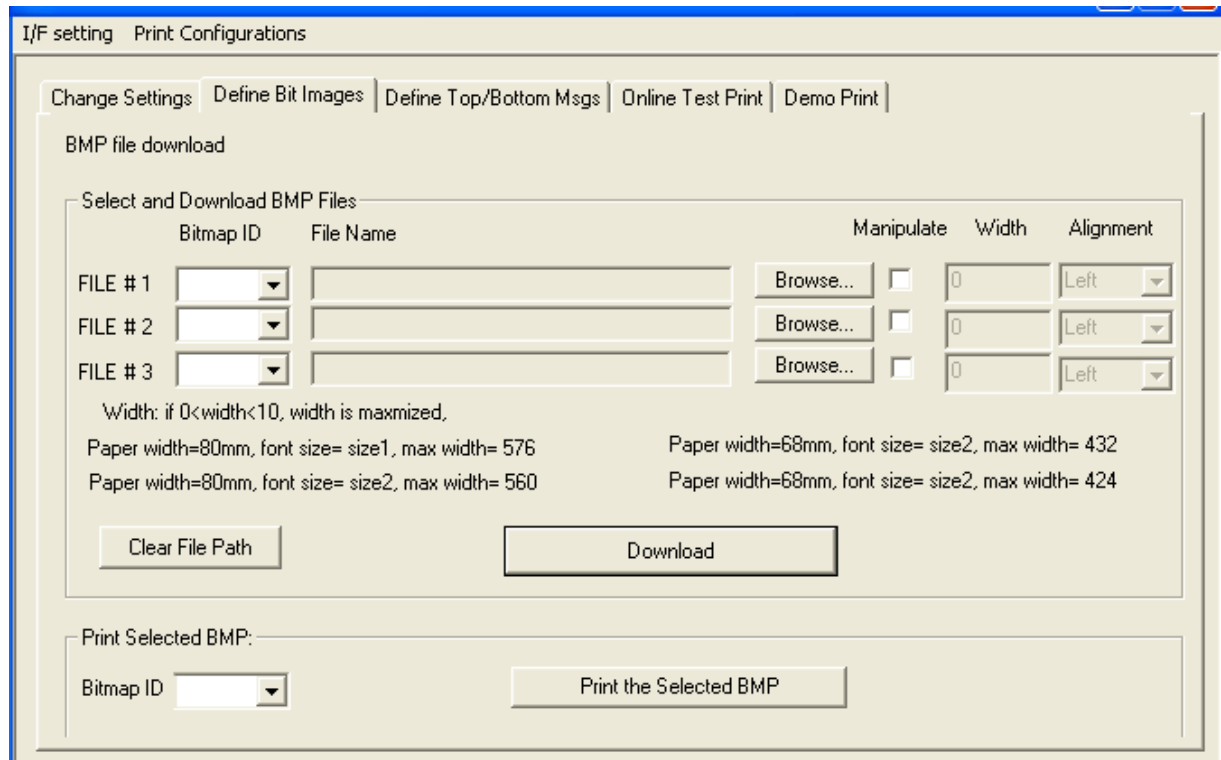


Step4:

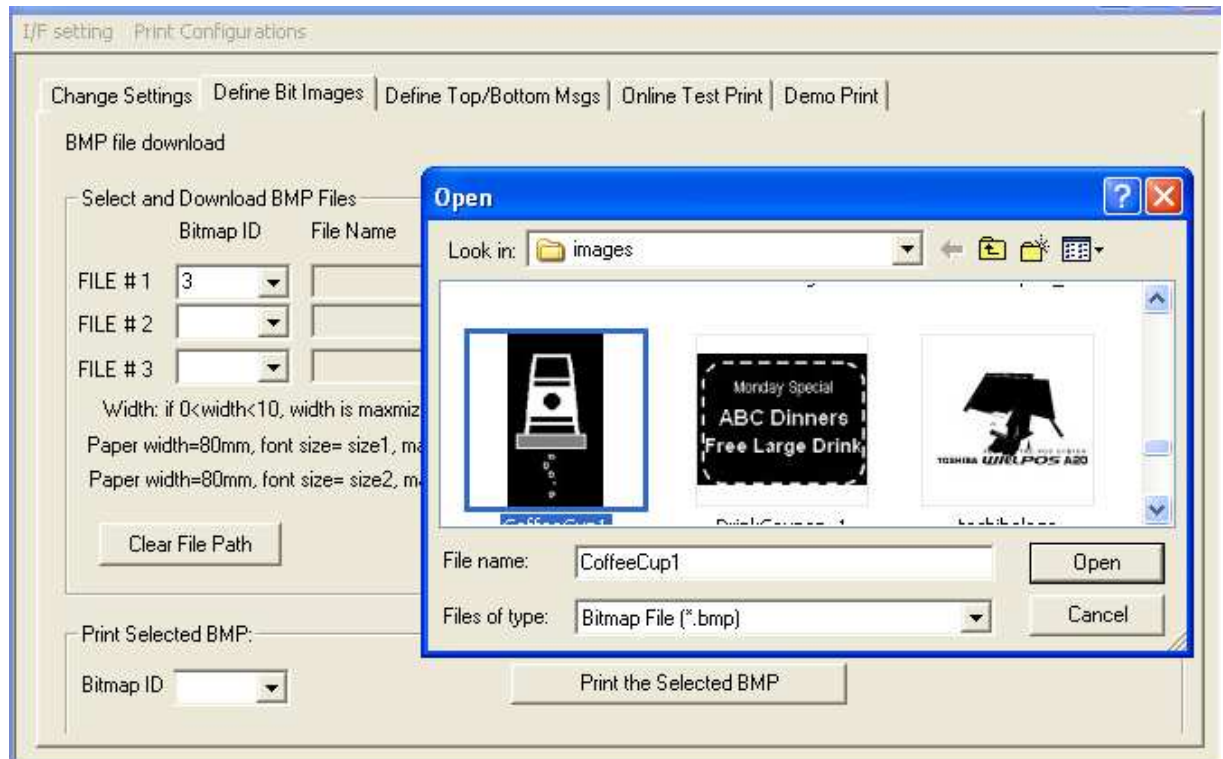
You can repeat step 1, to check the current setting s

3.2 Function2:DownloadBitImages

On the top tab menu, select "Define Download Bit Images", a window is shown, as follows:



Select a Bitmap ID, which will be the Logo ID in the printer to be downloaded, and then select a Bitmap graphic file, the files should be only monochrome bitmap and with size limit.



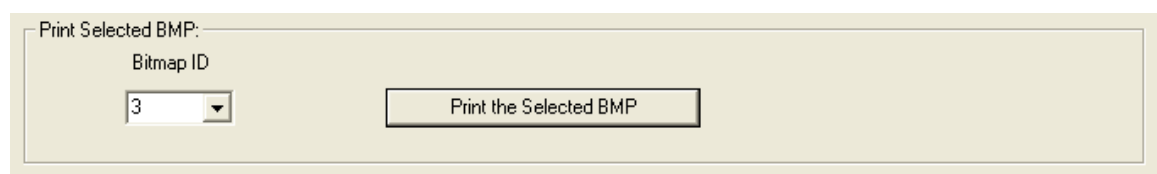
You can select up to 3 files and download together simultaneously.

If you need to manipulate images, please click the checkbox, and type a value in the Width box. Please notice the width value limit shown in the page.

After finish select, click "Download" and the BMP files will be downloaded to the printer.

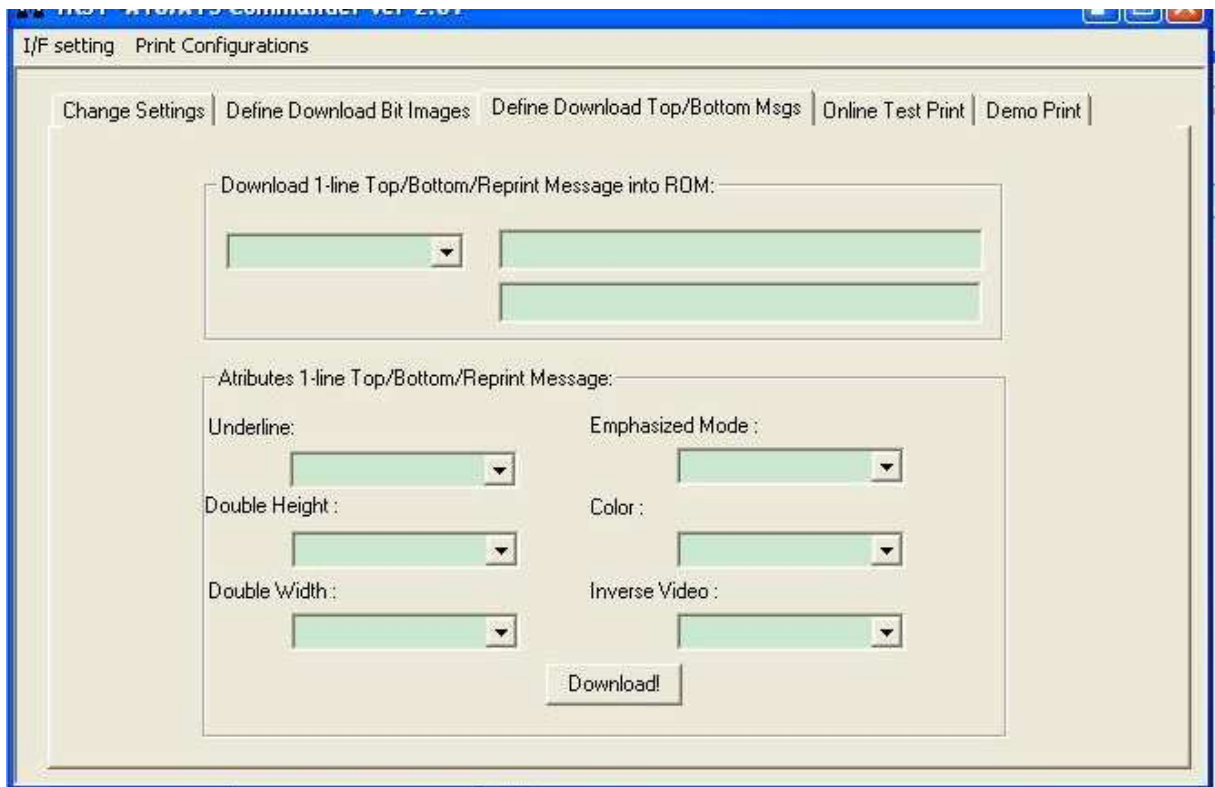
Print Download Bit Image:

You can select Logo ID and perform print, to check whether files are successfully downloaded to its respective ID.



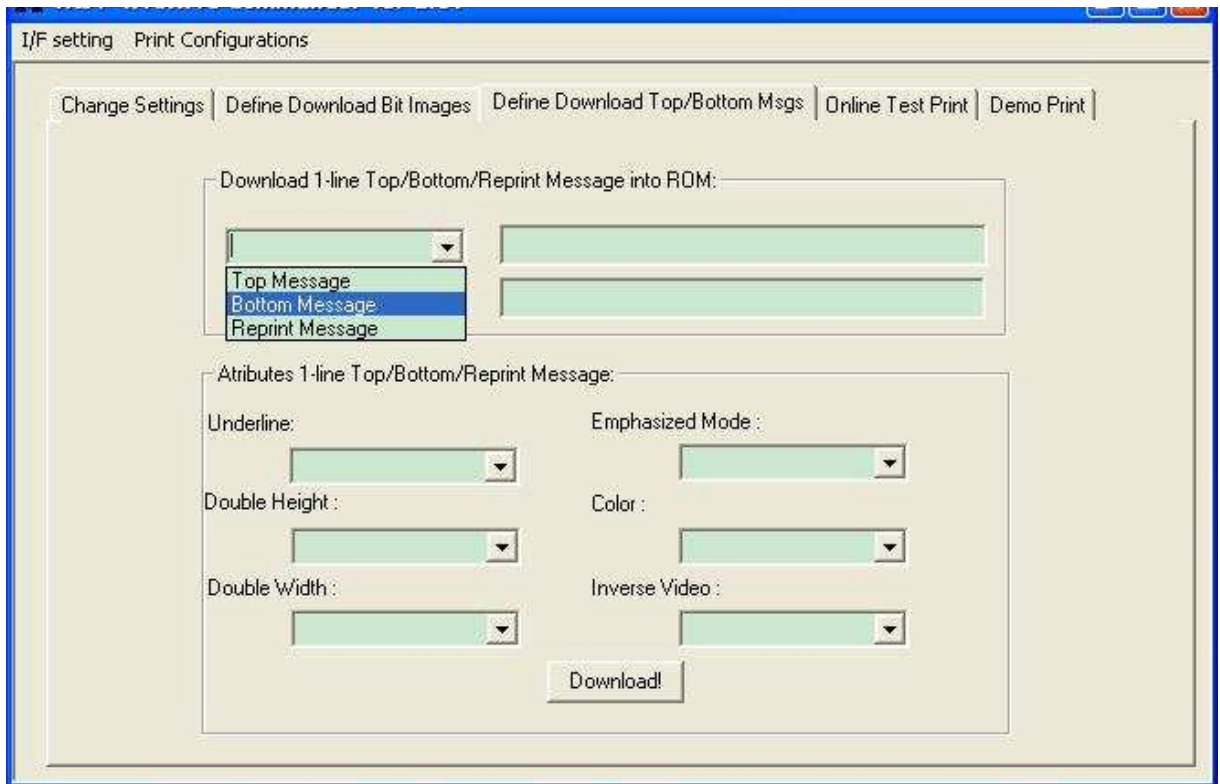
3.3 Function3:DefineTop/Bottom/ReprintMessages

On the top tab menu, select "Define Download Top/Bottom Msgs", a window is shown, as follows:

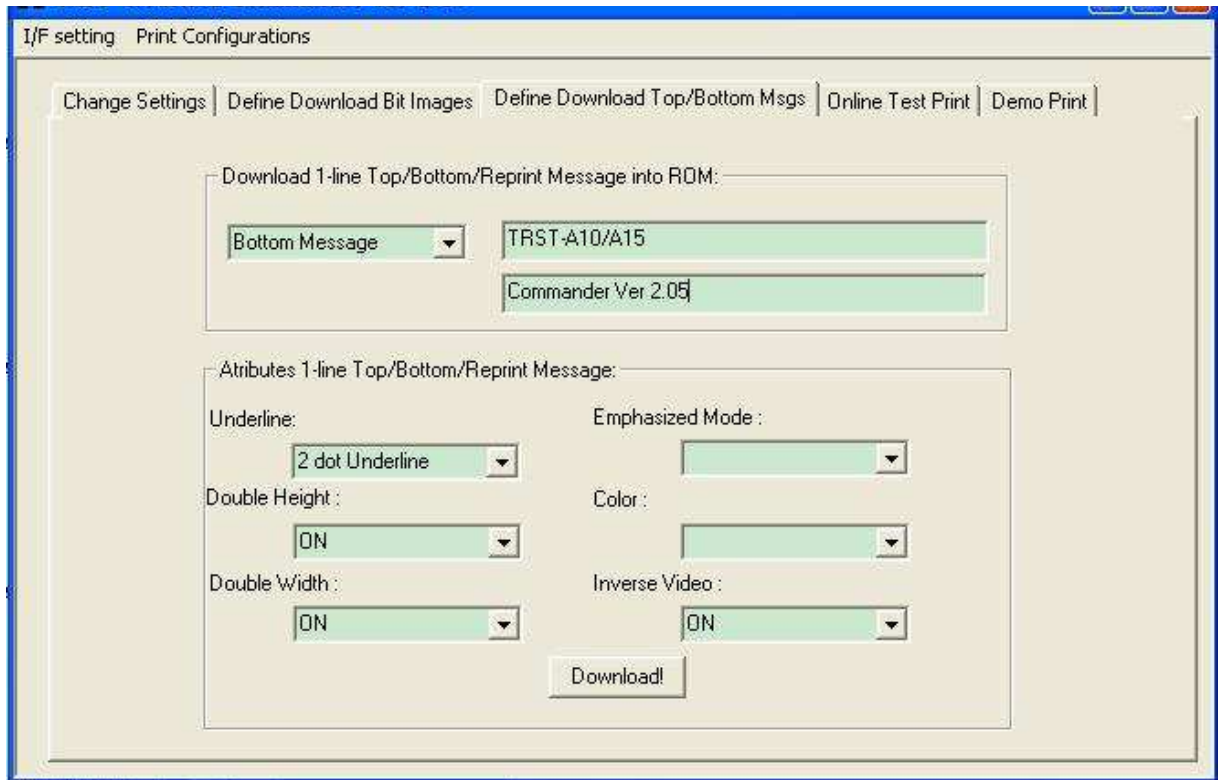


Please select message type and you can type the first and second line message in the first and second text box respectively.

The following picture shows that the message type is bottom message and the first line of bottom message is "TRST-Axx" and the second line is version number of Commander.



Character attributes can be changed from the dropdown box. If the character attributes are left black, then the default setting will be used when downloading the message.



After finished setting up the message type, message content, and message attributes, click the download button to download the message to printer. After download complete this message box will be shown.

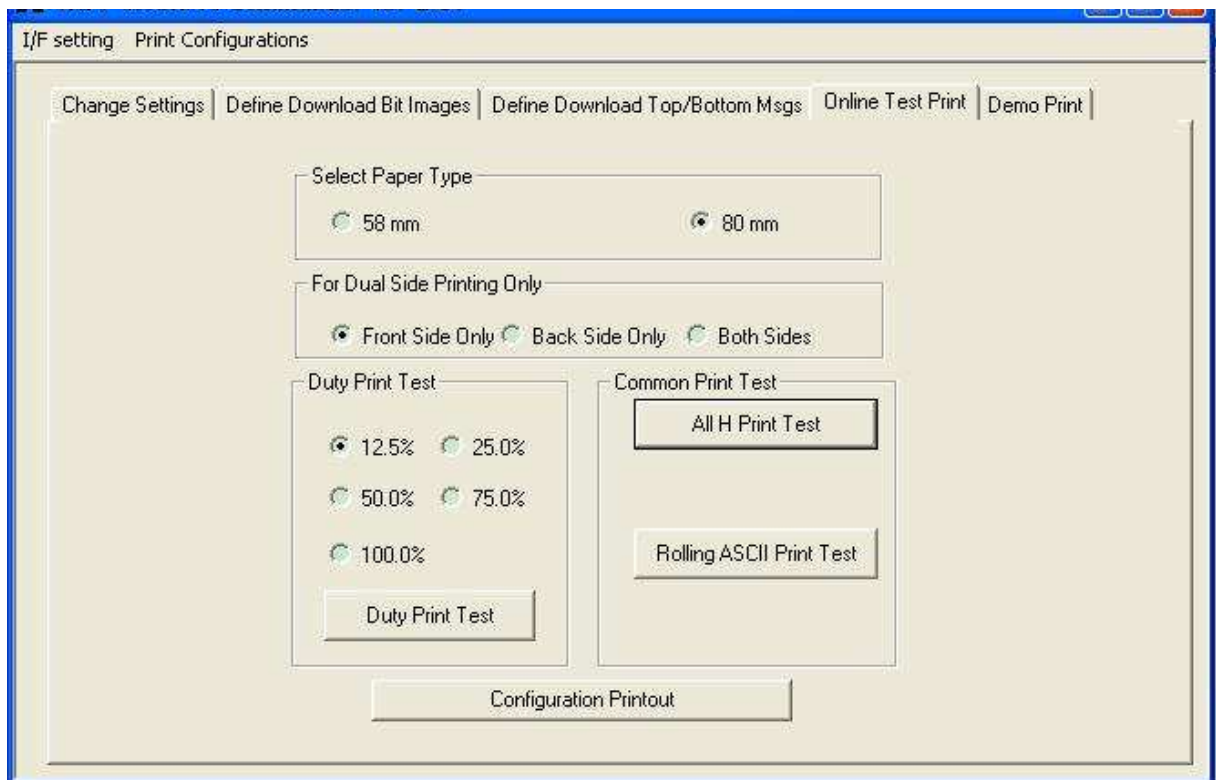


3.4 Function4:OnlineTestPrint

On the left function list, select "Online Test Print".

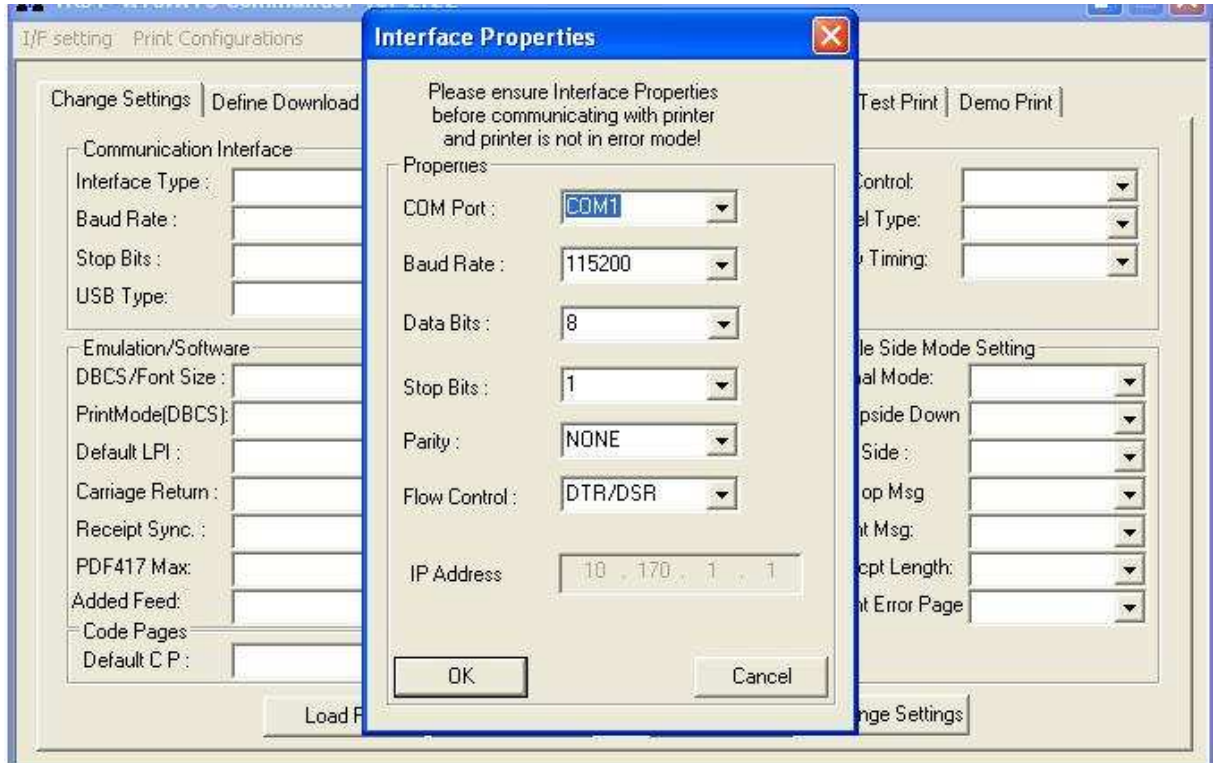
Select the test parameters, "Select Paper Type", "For Dual Side Printing Only", then select the online test type.

Make sure "I/F setting" is correct

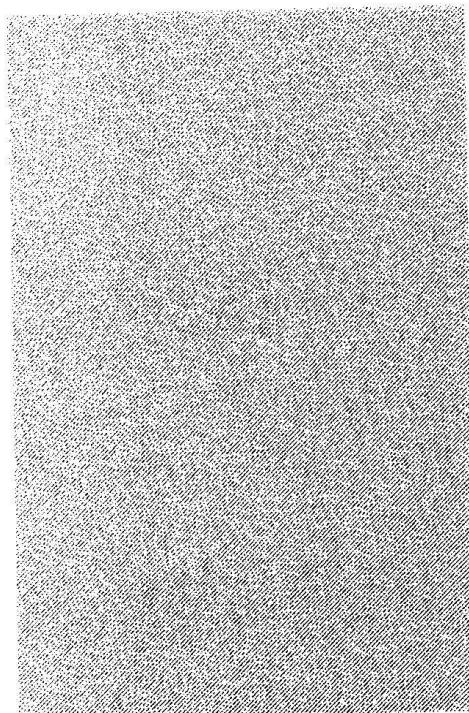


a) **Example 1:**

If user wants to print 25% duty print with 58mm width thus using single side printer using serial interface. Set the interface properties according as shown below picture:

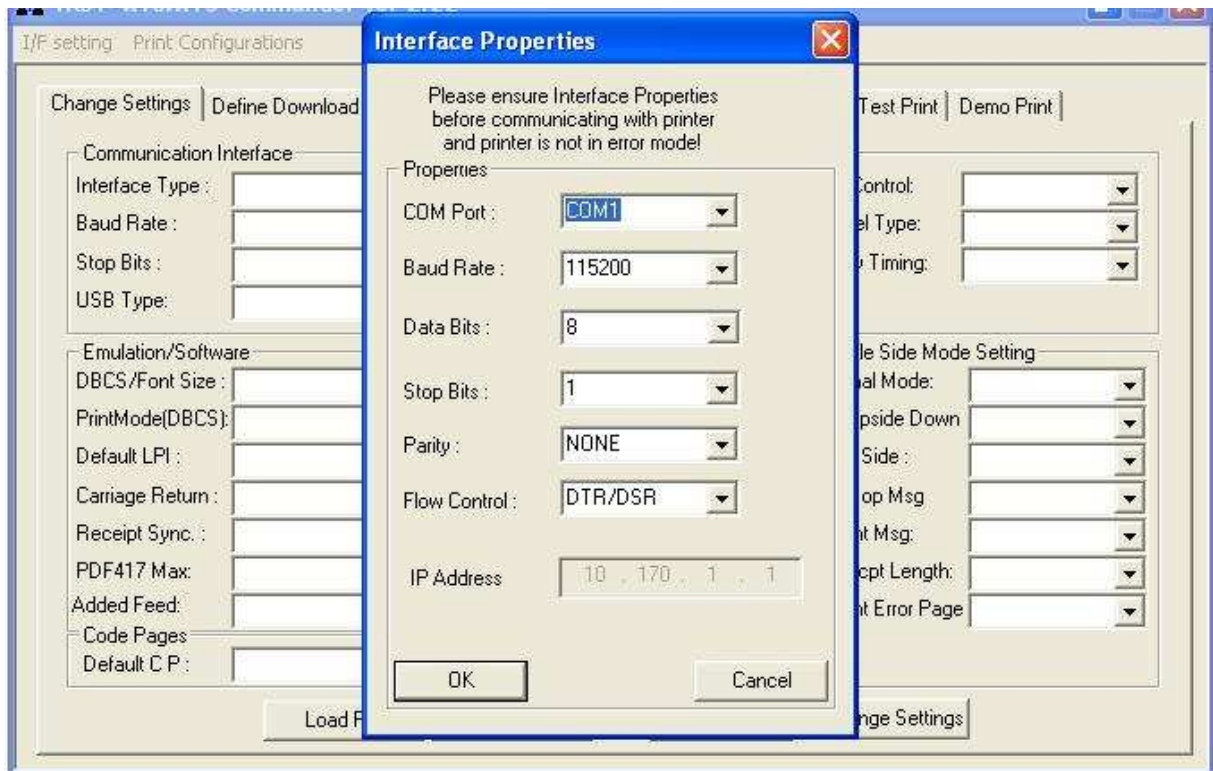


On "Online Testprint" window, Please select "58mm", "frontside only" (its default value) and "25.0%". Then click on the button of "Duty Print Test". You will get a printout as follows:

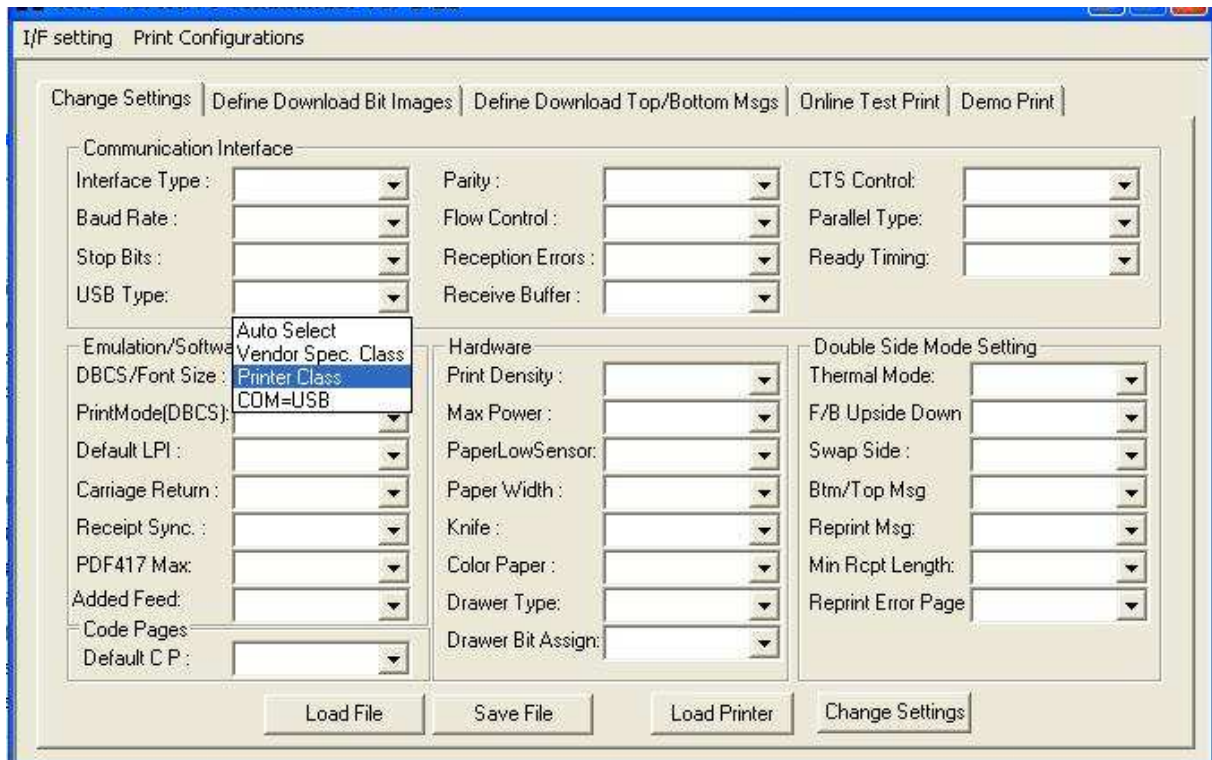


b) Example 2:

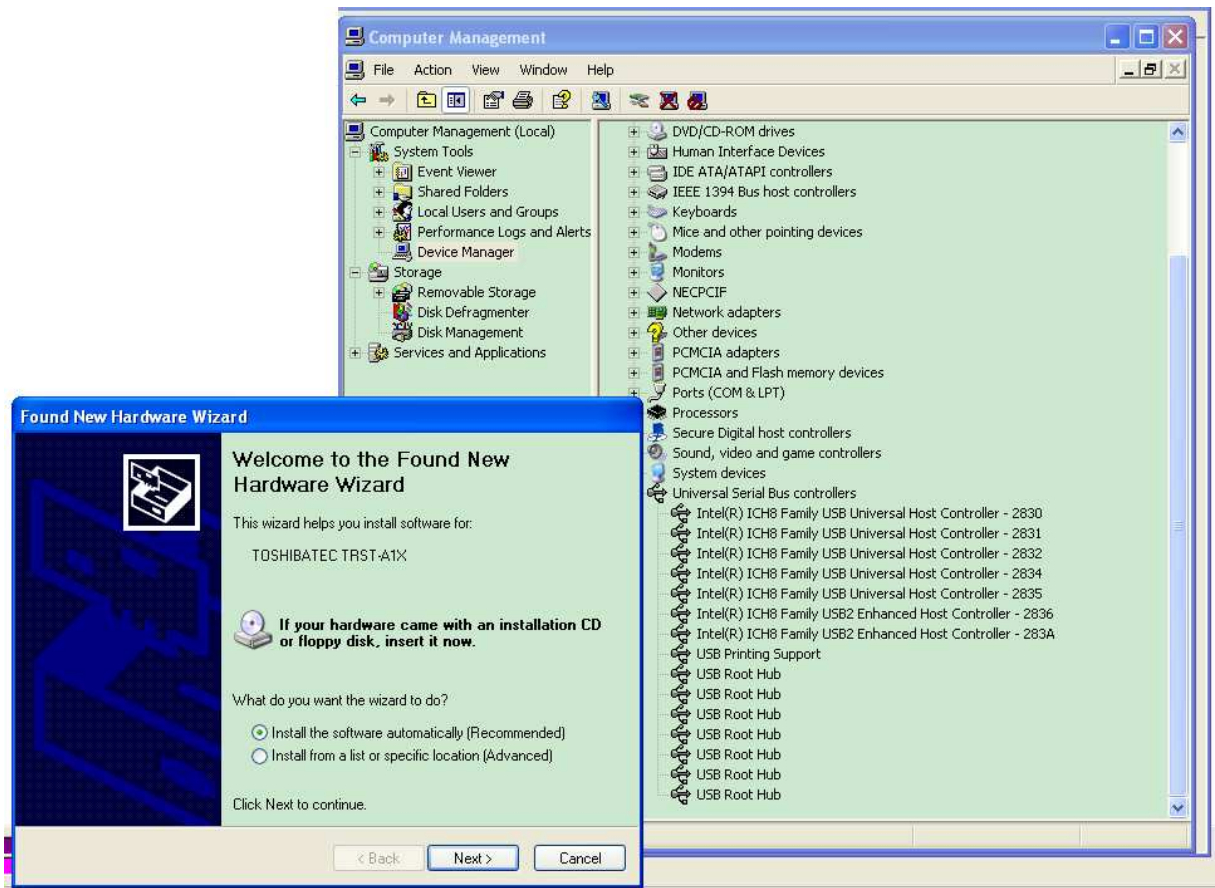
You want to get a printout of "80mm" dual side printing using RS232 interface now, first set the interface properties according to the picture below:



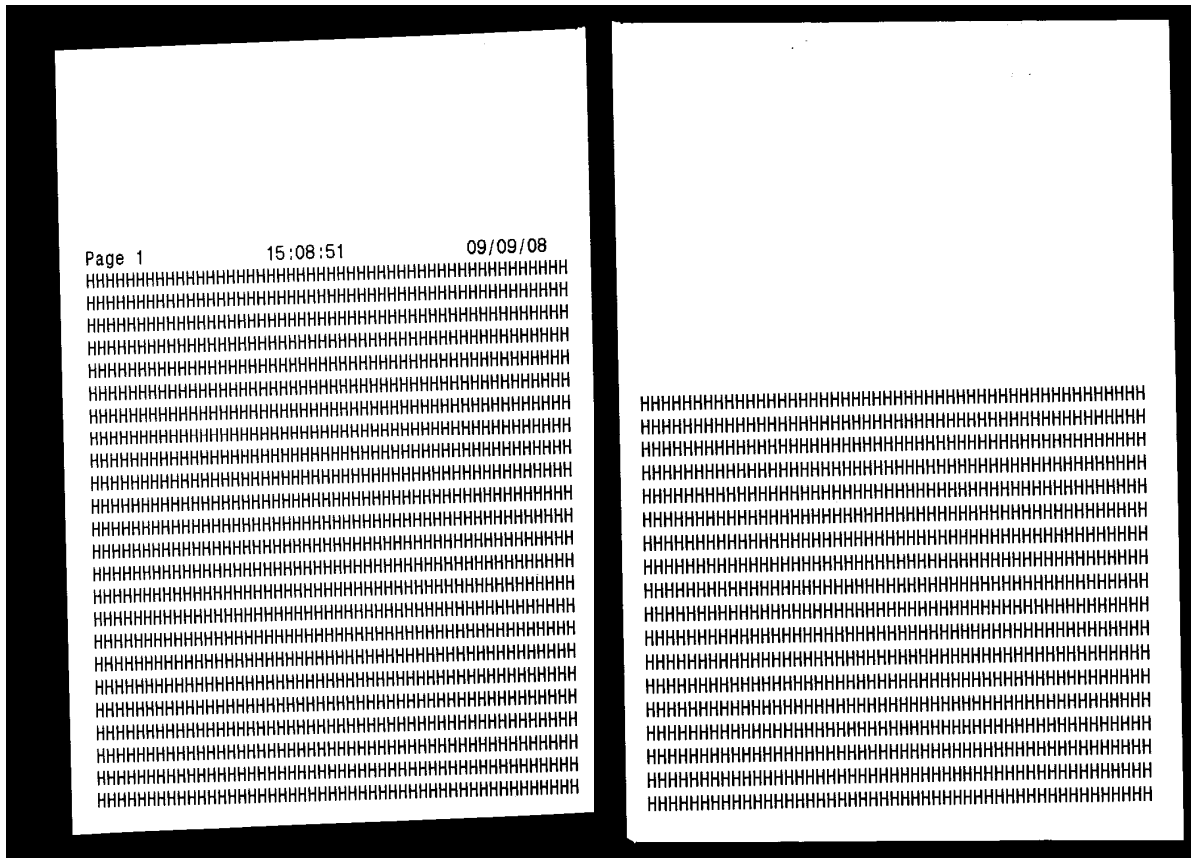
Then change the printer settings of "USB type" to "Printer class", and click "change setting"



The printer is reset and reconnected, if you open your "computer management", you can see there is "USB printing support" under "Universal serial Bus", the printer is detected, and click "Cancel" on "Found New Hardware Wizard" since you don't need to install driver.



On "Online Testprint" window, please select "80mm", "Both sides". Then click on the button of "All H Print Test". You will get a printout (front and back) as follows:

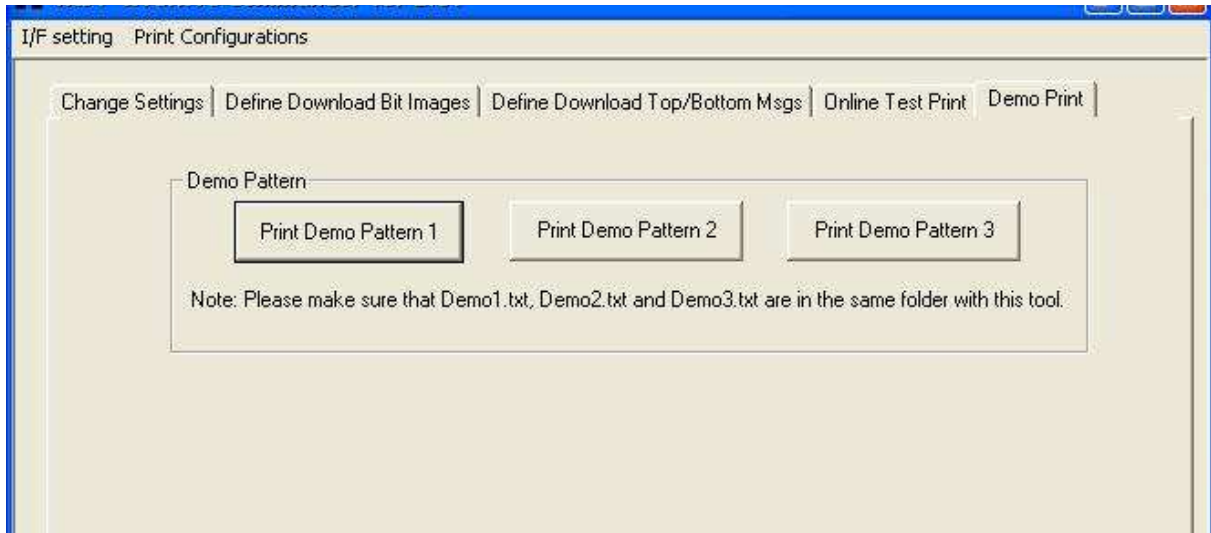


3.5 Function4:DemoPrint

On the left "functionList", select "DemoPrint".

Click on the print demo pattern button to get the printout.

Make sure the setting is correct



Using a single side Gent printer, the printout for the 3 patterns is as follows:

