

WILLPOS A20



DESIGNHUTCOLUK - JN725E42

WILLPOS A20

Retail Innovation at Your Fingertips

> INHERITS THE BEST WILLPOS A10 FEATURES

Stylish and Compact Design



Easy Maintenance

- Easy clicking mechanism to reach interfaces, hard disk and to install customer display
- Tool-less screws release the hard disk, motherboard, power supply, TFT screen and MSR



Connectivity and Tidy Cabling

- Covered ports with tidy cable management



The Toshiba WILLPOS A20 - Retail Innovation at Your Fingertips

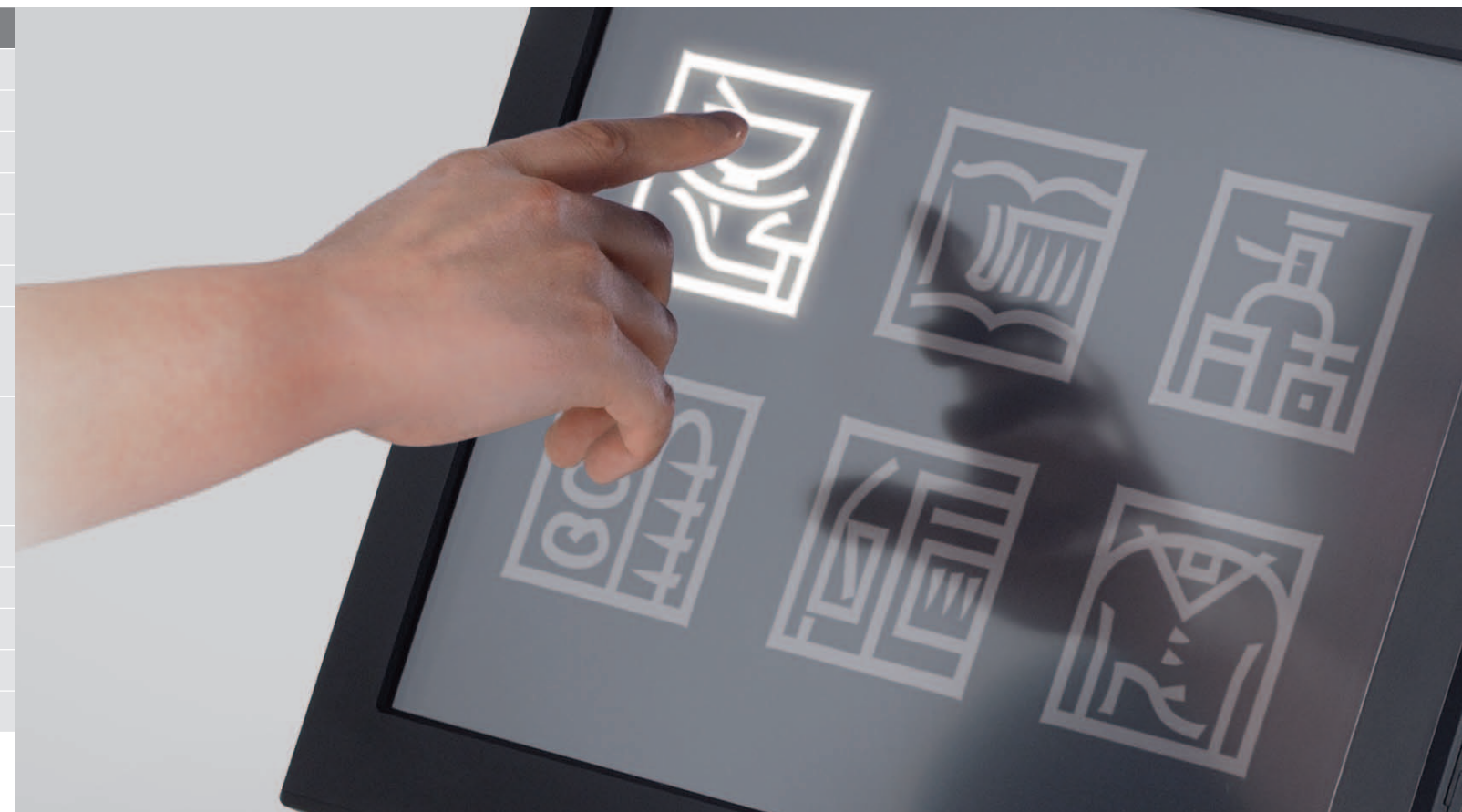


TOSHIBA TEC's new POS system is called **WILLPOS** (Worthy, Innovative, Leading, Low-cost Operation) and represents the future of our POS business. "WILL" also signifies our strong will, or commitment, to achieve *monozukuri*. We will strive to make TOSHIBA TEC **WILLPOS** synonymous with general POS systems.

Your TOSHIBA TEC Dealer:

| | 15" Model | 12" Model |
|---------------------|--|-----------------------------|
| CPU | Intel Celeron M440 (1.86GHz) / Intel Core2 Duo T7400 (2.16GHz) | |
| Memory | 512MB / 1GB (Max. 4GB) DDR2-533/PC-4200, 2 slots | |
| Display | 15" TFT touch (1024 x 768) | 12.1" TFT touch (800 x 600) |
| Dual Display | Optional: 12" or 15" | Optional: 12" or 15" |
| HDD | Type A : 160GB or over, SATA x 1 (Max. 2 Drives) Type B : 250GB or over, SATA x 1 (Max. 2 Drives) | |
| RAID | Optional: Type B: 2 x 250GB or over (RAID1)* | |
| Options | Single-sided receipt printer - double-sided receipt printer remote customer display - cash drawer - fixed or tilting LIU display iButton (Dallas key) - magnetic stripe card reader - top cover wireless cover with cable (USB) solid state flash disk (Max. 4GB) | |
| Interfaces | 2 x COM D-Sub9 (male); 2 x powered COM D-Sub9 (female) 6 x USB (2.0), 2 x powered USB (12V), 1 x powered USB (24V) 1 x PS/2 for mouse & 1 x for keyboard 2 x 24V drawer interface 1 x 15 pin VGA female type LAN 10Base-T/100Base-TX Ethernet (RJ45) with LED | |
| Audio | Line-out / Mic-in, 2 x stereo speakers with volume control | |
| AC Inlet | AC inlet connector | |
| Power Supply | 95W / 105W internal switching | |
| Weight | 11.5kg | 10.5kg |
| Dimensions | 366(W) x 251(D) x 359(H) mm | 306(W) x 247(D) x 337(H) mm |

*RAID 1 : Mirroring



*Please contact your local dealer for more information. All company and/or product names are trademarks and/or registered trademarks of their respective owners. All features and specifications described in this brochure are subject to change without notice.

TOSHIBA

TOSHIBA TEC CORPORATION
www.toshibatec.com

Oval Court Ohsaki Mark East
2-17-2, Higashi Gotanda, Shinagawa-ku, Tokyo,
141-8664 Japan

TOSHIBA

Leading Innovation >>>

Specifically designed to reduce energy usage and environmental impact, the WILLPOS A20 is the finest POS choice for retailers looking for supreme performance and reliability with impressive green credentials.





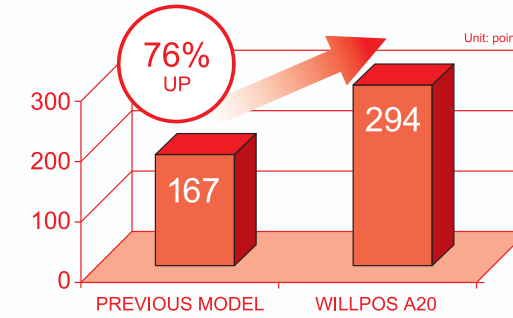
WILLPOS A20

LESS ENERGY MORE POWER

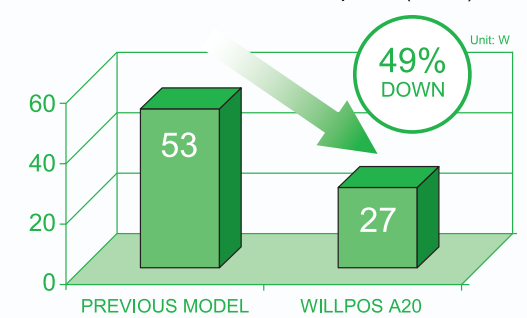
We had a vision of the future and made it real. Enjoy.

With a wealth of long-term experience and knowledge, Toshiba consistently designs and manufactures its award-winning POS ranges from scratch, right down to the hinges.

CPU Performance Benchmark



CPU Power Consumption (max.)



APPLICATIONS

With its uniquely sealed design to cope with liquid and dust ingress, the WILLPOS A20 is the POS of choice for all retail and hospitality environments.

Hotels, bars, cafés, restaurants

Groceries, bakeries, butchers

Service stations & kiosks

Activity & entertainment centres

Pharmacies & opticians

Clothes & shoe shops

ROBUST

Fully adjustable screen, rigorously tested for the harsh retail environment including spill protection



TOSHIBA

WILLPOS A20

RELIABLE

Optional RAID HDD mirroring or SSD



PAPER SAVING

Combine the WILLPOS A20 with the TRST-A15 double-sided receipt printer to save up to 45% on paper rolls



POWER & ECO

High performance Intel Celeron M with 76% performance increase and 49% power saving (compared with previous models)

MULTI-MEDIA

Stereo speakers & volume control



GREEN MACHINE

We work to strict ecological policies to benefit both the environment and our customers.

- Recyclable chromium-free metal
- Recyclable halogen-free plastic
- Packaged in recyclable paper products
- Built and supported for a long life cycle
- Design and manufacturing on ISO14001

LESS ENERGY, MORE POWER

The innovative powerful and low-energy processor gives top-level POS performance whilst reducing running costs and CO₂ emissions.

RECYCLING PROGRAM

We will collect and recycle our used units, re-processing them for re-use.

EXCITING - LARGE CUSTOMER TFT & SPEAKERS

- Attract, entertain and stimulate customers with movies and music
- The possibilities for promotions are infinite

RELIABILITY

HDD Mirroring (RAID1) - Selecting the RAID hard disk option provides invaluable peace of mind, especially for small businesses. Twin hard drives divide and replicate your business-critical information.

SSD - The WILLPOS A20 also supports solid state drives and memory which will resist extreme shocks and temperature variations to give unsurpassed reliability, considerable power savings and very easy maintenance.

FLEXIBILITY FOR CHOICE

We have the flexibility to tailor the following to your specific requirements:

- Remote operator TFT display customisation for smaller checkout areas
- Non-touch customisation for keyboard input for non-touch software
- Cabinet colour options
- Delivery timescales
- Software options for all markets (software by Toshiba in-house or partner)

*(subject to minimum order)

TOSHIBA

Leading Innovation >>>