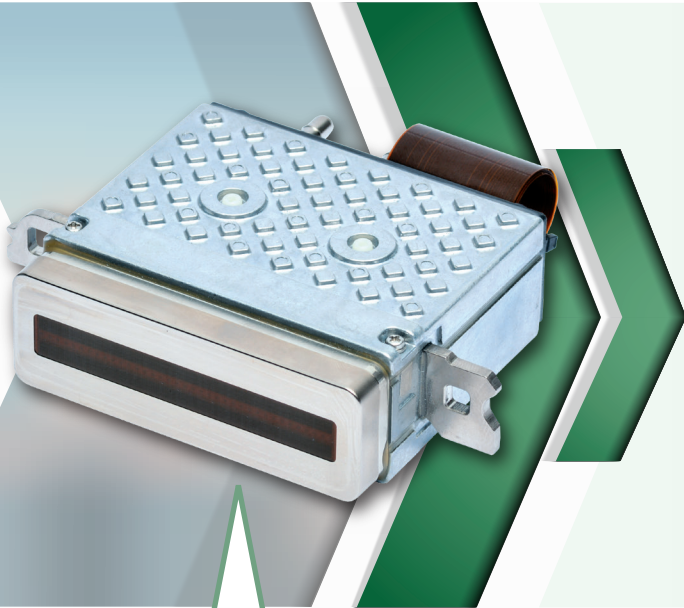


TOSHIBA

Ink recirculating type inkjet head

CF1B/CF1BL/CF1BXL 300dpi

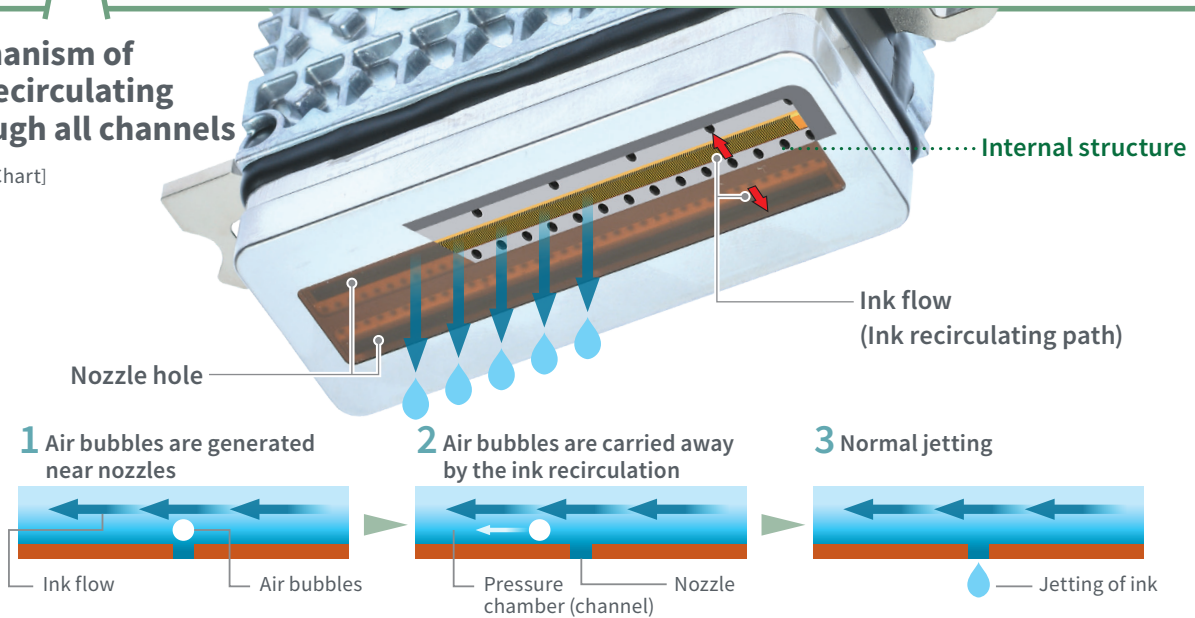


Ink recirculation through all channels Ensures high jetting reliability

- Suitable for jetting ink with **larger particle size and higher gravity**
- Controlling ink temperature by ink recirculating system **enables stable print quality**
- **Stable start-up after long downtime**
- Less necessity of maintenance reducing downtime and ink waste **resulting in low running cost and eco-friendliness**

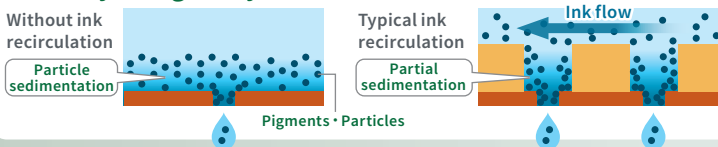
Mechanism of ink recirculating through all channels

[Image Chart]



Feature of ink recirculation through all channels

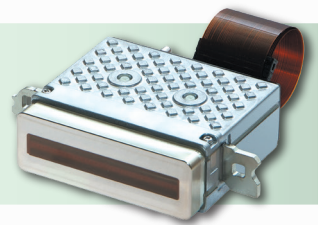
Stable jetting of easily sedimenting ink with higher viscosity and gravity



TOSHIBA TEC ink recirculation

- Ink is recirculated through all channels, preventing sedimentation and reducing nozzle blockages drastically.
- Because the ink path is simple, it is excellent at carrying away air bubbles or unwanted particles.

Specifications



CF1B

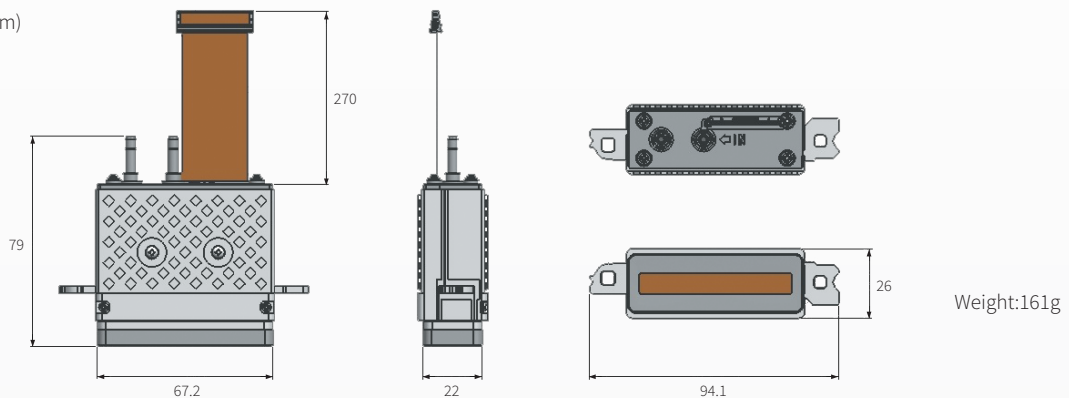
CF1BL

CF1BXL

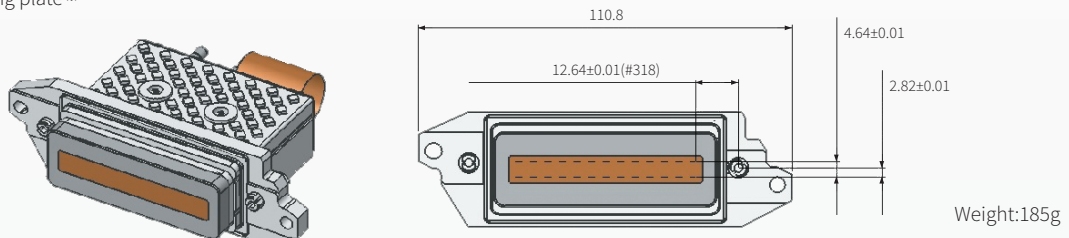
Print method	On-Demand piezo technology		
Ink recirculation structure	Ink recirculation through all channels		
Print width	53.7 mm		
Nozzles	636		
Nozzle resolution	300 npi		
Number of rows	2		
Nozzle spacing (Row to row distance)	4.64 mm		
Greyscale levels	8 levels/0~7 drops	4 levels/0,5,6,7 drops	7 levels/0~6 drops
Drop volume	6~42 pL	57~80 pL	36~180 pL
Frequency	4.97 kHz/7 drops	4.8 kHz/7 drops	4.8 kHz/6 drops
Ink type	UV-curing & oil-based (consult us for compatibility assurance)		
Built-in temperature sensor	Included		
Head cooling method	Air-cooling		
Size, weight	94.1 mm(W)× 26 mm(D)× 79 mm(H), 161 g		

※ Gradation levels and drop volumes depend upon the type of ink used. Maximum printing speed and linear frequency can be increased by reducing the number of drops per dot (dpd).
 ※ Four different types of power supplies (: 5 V, 39 V and two units of 14-31 V) are required in order to drive head.
 ※ The specifications above may be modified due to certain circumstances.

External dimensions (mm)



With optional positioning plate ※



※ A factory-fitted option enables easy and accurate head positioning with a precision of 10µm to the 1st nozzle.

TOSHIBA TEC CORPORATION

Inkjet Business Group

Oval Court Ohsaki Mark East, 2-17-2, Higashi-Gotanda, Shinagawa-ku, Tokyo 141-8664, Japan
<http://www.toshibatec.com/en/products/industrial/inkjet/products/>

