

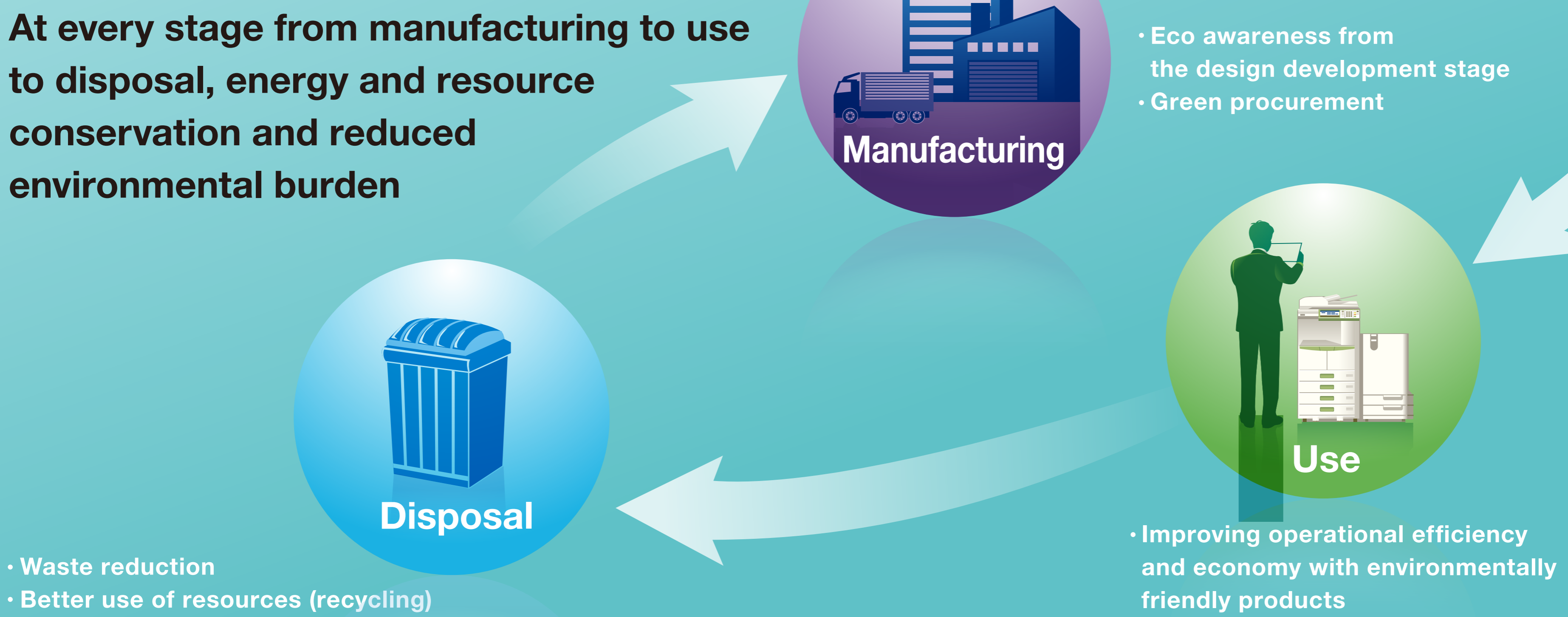
TOSHIBA TEC Ecological Policy

Environmentally Friendly Affluence

Environmental planning prioritizing the environment and resources in business processes and products for a more sustainable society



At every stage from manufacturing to use to disposal, energy and resource conservation and reduced environmental burden



Better use of paper

Paper has to be used more economically to save wood and water and improve sustainability.

CO₂ emissions must be reduced during production to help slow down global warming.

